

FALL/WINTER 2013

 **IMSA**

**360**

An Evolution of  
**STEM Education**

News for Alumni and Friends of the  
Illinois Mathematics and Science Academy®  
2013 IMSA Fund Annual Report



**Online Learning** – IMSA  
is Always Changing

**APA Studies** Impact of IMSA,  
Specialized STEM Education

**CoolHub Poised to Expand**  
with New Partnerships

**IMSA Board of Trustees****OFFICERS**

**Chairman**, Sheila MB Griffin  
*Executive VP, Griffin Holdings, Inc.*

**First Vice Chairman**, Dr. Paula Olszewski-Kubilius  
*Director, Center for Talent Development, Northwestern University*

**Second Vice Chairman**, Dr. Erin W. Roche '89  
*Principal, Prescott Magnet Charter School*

**Secretary (Non-Voting)**, Britta McKenna  
*Chief Innovation Officer, Illinois Mathematics and Science Academy*

**Treasurer (Non-Voting)**, Patrick Furlong  
*VP for Business and Finance/CFO, Illinois Mathematics and Science Academy*

**TRUSTEES**

Eric R. Brown, M.S. Ed  
*Biology Teacher, Evanston Township High School #202*

Dr. Jerome "Jay" Budzik '95  
*Chief Technology Officer, Twelffold Media*

Kathy He  
*Chief Executive Officer, Vivregen LLC*

Dr. Steven T. Isoye  
*Superintendent, Oak Park and River Forest High School District 200*

Leslie N. Juby  
*Substitute Teacher, Batavia, IL Public Schools*

Dr. Mary Kalantzis  
*Dean, College of Education, University of Illinois at Urbana-Champaign*

Carey Steger Mayer '90  
*Architectural Group Leader, Dewberry Architects*

Dr. Luis Núñez  
*Consultant, BioTarget*

Dr. Marsha R. Rosner  
*Charles B. Huggins Professor, Ben May Department for Cancer Research, The University of Chicago*

**EX-OFFICIO BOARD MEMBERS**

Dr. Karen Hunter Anderson, *Executive Director, Illinois Community College Board*

Dr. Harry Berman, *Executive Director, Illinois Board of Higher Education*

Dr. Christopher Koch, *State Superintendent, Illinois State Board of Education*

Dr. James Rydland, *Superintendent, West Aurora School District 129*

**President**

Catherine C. Veal

The mission of IMSA, the world's leading teaching and learning laboratory for imagination and inquiry, is to ignite and nurture creative, ethical, scientific minds that advance the human condition, through a system distinguished by profound questions, collaborative relationships, personalized experiential learning, global networking, generative use of technology and pioneering outreach.

# Changing Ground

One of the best things about IMSA that never changes is that we continue to change, not "change for change's sake," but change to keep learning, leading and innovating, change grounded in who we are and who we aspire to be. One area of big change on the horizon relates to upgrading our facilities.



**Catherine C. Veal**  
IMSA President

For some time now, we have coped with an aging campus, an academic building much of which has not been renovated since the 1970s (before IMSA opened and occupied the then-closed facility), and residence halls in serious need of major rehabilitation. Thankfully, the State of Illinois has now made available approximately \$10 million to renovate the exterior of our residence halls and fix our leaking roof.

Additionally, we have breaking news to share! Funding to renovate our antiquated upstairs science labs has made it through the pipeline and \$3.6 million has been released by the State of Illinois. More details are forthcoming about this public-private partnership. Also, \$50,000 will be invested this year to upgrade our wireless and wired capacity on campus, thanks to donations by alumni, parents and friends.

And with great excitement and anticipation, we can now announce a major gift from an alumnus to create an "Innovation Center" on campus, modeled in part after Chicago's bustling 1871 co-working center for digital startups. The design and resources of this incubator space, an approximately 6,000 sq. ft. \$2 million project, will immerse and support IMSA students and alumni, other Illinois students who participate in IMSA TALENT (Total Applied Learning for ENTrepreneurs) and local entrepreneurs in the life and work of startups. More on this in our spring issue of IMSA360.

Other capital projects will be identified in a comprehensive facility master plan, to be developed this year with donor funds, and then we will reach out to alumni, parents, board members, friends, corporations and foundations and ask you to supplement the State's significant capital investments. These plans will develop soon.

As we carry the best of IMSA past and present forward, with a strengthened public-private partnership, we will see and feel physical changes befitting a state agency that also aspires to be the world's leading teaching and learning laboratory for imagination and inquiry. It is an exciting time. Yet another time to be proud.

Thank you for helping us create and live into our desired future. **360**

**IMSA Fund for Advancement of Education  
Directors**

**OFFICERS**

**President**, John Hoesley '89  
*Managing Director*, Silicon Valley Bank

**Vice President**, Pamela Blackwell  
*CEO*, Blackwell Management Solutions  
*VP*, Blackwell Global Consulting

**Treasurer**, Michael Suh '97  
*Portfolio Manager*, The University of Chicago,  
Office of Investments

**Secretary (Non-Voting)**, Paul Milano  
*Executive Director of Development*,  
Illinois Mathematics and Science Academy

**BOARD OF DIRECTORS**

Ross Hemphill, Ph.D.  
*VP, Regulatory Policy & Strategy*, ComEd

Vasu Kulkarni, Ph.D., M.B.A.  
*Director of Marketing and Business Development*,  
BP Americas Inc.

Stephanie Pace Marshall, Ph.D.  
*Founding President and President Emerita*,  
Illinois Mathematics and Science Academy

Glenn W. "Max" McGee, Ph.D.  
*Head of School*, Princeton International  
School of Mathematics and Science

Dan Mueh '90  
*Program Director*, Haemonetics Corporation

Joseph Nolan  
*Chief Commercial Officer*, Lundbeck, Inc.

Jacob Plummer '96  
*VP, Business Development*, Allscripts

Glenn Rippie, J.D.  
*Partner & Chief Financial Officer*, Rooney Rippie  
& Ratnaswamy LLP

**EX-OFFICIO DIRECTORS (Non-Voting)**

JuliAnn Geldner, J.D., Liaison to IMSA Parent Association  
Council, *IMSA Parent Association Council President*,  
2013-2014, *Legal Counsel/Practice Administrator*,  
The Geldner Center

Melissa Comenduley '90, Liaison to IMSA Alumni  
Association, *IMSA Alumni Association Treasurer*,  
Broadway Technology LLC

Luis Núñez, Liaison to IMSA Board of Trustees,  
*IMSA Board of Trustees*, Consultant, BioTarget

**Executive Editor**

Christina Kaucnik

**Managing Editor**

Mike Abrahamson

**Contributing Writers**

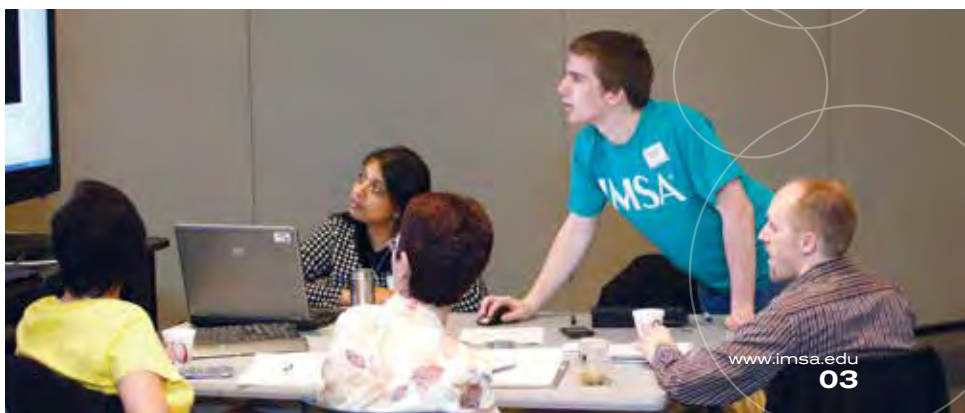
Mike Abrahamson, Melvin Bacani, John Hoesley '90,  
Carolyn Johnson, Christina Kaucnik, Paul Milano,  
Catherine C. Veal

**Photography**

Courtesy of IMSA/Chris Reader (unless otherwise noted)

*IMSA360* is published by the IMSA Office of Marketing and  
Communications and sent free to alumni and friends of the  
Illinois Mathematics and Science Academy.

Send comments, questions or story ideas to:  
**Mike Abrahamson, [mabrahamson@imsa.edu](mailto:mabrahamson@imsa.edu)**



# APA Study Leads the Way

## in Understanding Impact of IMSA, Specialized STEM Education

Part of IMSA's work is to "advance education through research," shedding light on STEM education by analyzing its own methods and results. IMSA did just that by taking a leading role in a groundbreaking research study, which examines the intermediate-term outcomes of STEM specialty schools for talented learners. The study, funded by the National Science Foundation (NSF) and conducted by the American Psychological Association (APA) and the University of Virginia, produced some results that affirm IMSA's ability to incubate students' interest in STEM, as well as some results that elucidate follow-up questions that will help reveal the impact of the Academy, and in doing so, progress it.

IMSA played a crucial role in the APA study, which released its initial results in July. Trustee Paula Olszewski-Kubilius and Director of Institutional Research and Effectiveness Christopher Kolar served on the research committee, helping to design, develop, and pilot the instruments of the study. IMSA's classes of 2004-2007 were surveyed as part of the study, which included over 3,500 graduates of 25 specialized STEM schools and over 1,100 participants in talent development programs at Northwestern and Johns Hopkins Universities.

One of the fundamental findings was that interest in STEM largely starts before IMSA's residential academy does; most participants were attracted to STEM in elementary school. The percent of students that graduated with STEM degrees was more than twice the national average in nearly every selective program in the study, which reflects this early interest. "Students show up at high schools and talent search programs with early interest," noted John Almarode, a principal investigator of the study. The study then asked, what do specialized public high schools of science, mathematics, and technology (SMT) like IMSA do for students?

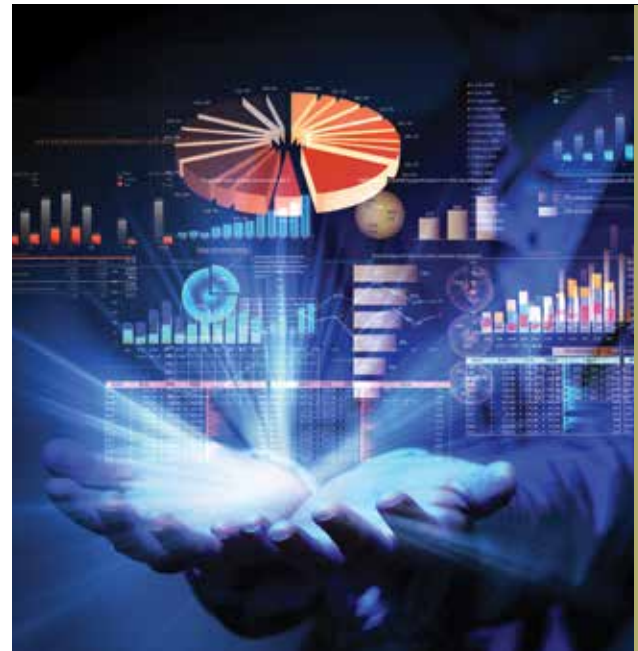
The study found that SMT schools, and IMSA in particular, intensified the interest of students who already have a proclivity for STEM. "Early interest alone is not enough. We have to take that interest and do something with it," continued Almarode. "We can either do things that help them maintain their interest and we only see a 64% bump [in STEM graduates over the national average], or we can create an environment like at IMSA... that actually causes their interest to intensify, and in that event we see a major, major influence not only to stay in the pipeline, but to go on to earn a degree in a STEM area."

**An environment like at IMSA... actually causes [STEM] interest to intensify, and in that event we see a major, major influence not only to stay in the pipeline, but to go on to earn a degree in a STEM area."**

— John Almarode, Principal Investigator for APA Study

The study showed that SMT students who felt their interest in STEM intensify while in high school were five times more likely to graduate from college with a STEM related major.

The IMSA specific data affirm the conclusion that the Academy intensifies interest in STEM. About 60% of IMSA graduates in the four participating classes earned STEM degrees as undergraduates, compared to about 50% of all specialized SMT high schools studied and a 22.6% national average reported by the National Science Foundation. Females, an underrepresented group in STEM education, also fared well at IMSA: 53% attained STEM degrees, as opposed to 46% of study participants.



Perhaps the most important results of this study for the future of IMSA deal with how IMSA intensifies STEM for those IMSA graduates that reported intensification, as these factors correspond to students being 2.5 times more likely to attain a STEM degree. The study looked at 16 possible factors for intensifying interest, and three of them applied to IMSA. Most significant among these for IMSA was faculty reinforcement of STEM learning. "When intensification of interest in STEM happens at IMSA, it is primarily due to faculty engagement with the students and reinforcement of their interests," said Christopher Kolar.

This study raises many questions, which IMSA is already looking to help answer through further analysis of this study, as well as by participating in follow-up studies. "In the coming year we will be unpacking the data and looking at how specific features of IMSA's academic program influence a variety of learner outcomes. We expect that this will inform future decisions in a wide range of areas, from research and inquiry to admissions, from the hiring, development, and evaluation of faculty to personalized learning," added Kolar. **360**

# WITH NEW PARTNERSHIPS, COOLHUB POISED TO EXPAND

**MSA's** CoolHub was started in 2009 with the goal of becoming the ideal online platform for collaborative innovation, a virtual space where teachers and students work together and with others unconstrained by traditional organizational structures. Though CoolHub has been used within and outside the Academy over the last few years, this year marks an important step in its development. CoolHub is starting two new collaborative projects, the Mentor Matching Engine (MME) and a state-funded partnership with the Illinois State Board of Education (ISBE) to help implement the Next Generation Science Standards, both of which facilitate teachers and students working with university and industry partners.

## What CoolHub Does

CoolHub connects students, parents, teachers, researchers, and more through a combination of real world and virtual meeting spaces. The real world spaces, or "CoolSpots," are tech-enabled zones where small groups can meet, and they are connected through a virtual network that includes video conferencing, wikis, blogs, forums, and searchable databases.

"One of the best and most unique features of CoolHub is how customizable it is; every project group can design their own pages, and every member tailors their personal workspace to their preferences," said Carl Heine, Program Director for CoolHub.IMSA. "Like real life (and unlike many collaborative online workspaces), organizations use CoolHub to create a virtual workspace that best fits their individual needs," added Heine.

## The Mentor Matching Engine (MME)

The Mentor Matching Engine (MME) was born out of Northwestern University's Office of STEM Education Partnerships' (OSEP) need to connect STEM research mentors with K-12 students. In order to fulfill this need, CoolHub customized their web application to best organize online mentorship projects and, working closely with OSEP, developed the MME as a new platform for mentor, teacher, and student collaboration. According to Adjunct Faculty/Mentor Jacki Naughton, who helped establish the partnership, one of the biggest selling points for using the MME over other e-mentoring sites is its structure of supervised collaboration. "What sets the MME apart is that not only do all mentors have to go through a background check, but teachers supervise every interaction and each project," Naughton noted. "The Mentor Matching Engine provides the support students need to engage in inquiry-based, independent research because they are able to get guidance from experts who have made a commitment to mentor," added Naughton.

Once CoolHub's work on the MME was underway, the widespread appeal quickly became evident, and another partner emerged in the Illinois Science and Technology Institute (ISTI). The ISTI has chosen CoolHub as the platform for the e-mentorship initiative of the State's R&D STEM Learning Exchange, which will connect nearly 50 organizations to 15 Illinois schools with the goal of enhancing college and career readiness. The MME will be the platform of collaboration between these organizations and more than 150

students in its first year. Both public and private organizations will participate in the pilot program, and IMSA numbers among the partner high schools.

Starting this fall, the MME will serve a third purpose: the IMSA TALENT entrepreneurial program will use it to streamline the process of matching IMSA students with internships at 1871, the ubiquitous digital co-op in Chicago's Merchandise Mart. Though the Academy and 1871 have official ties, including an IMSA meeting room within the complex, this will be IMSA's first structured system for matching interns to tech companies.

## WIP-5 – The Workshop Institute Partnership

In the coming year, CoolHub will also be used to help Illinois teachers work with the Next Generation Science Standards. The National Research Council, in collaboration with teams from 26 states, recently created these standards to modernize K-12 science education, and the ISBE made the Illinois Workshops Institute Partnership (WIP-5) responsible for implementing them with secondary school teachers. Through grants dispersed across the state, the WIP-5 has enlisted 250 teachers to work with students, university, and industry partners, and they have chosen to use CoolHub as the digital platform for collaboration and content publishing.



To help ease the transition to the new science standards, CoolHub has created a unique public workspace for this partnership. "By allowing teachers to publicly post curriculum, lessons, projects, and results, we hope to quickly build a wealth of digital content that teachers can draw on," said Heine. These teachers have already started training with CoolHub, and they will be bringing in students and outside partners this fall.

## The Future of CoolHub

These nascent projects will bring hundreds of new users to CoolHub this year, and though this will certainly keep IMSA's innovation team busy, they believe they are ready to take on the challenges of expansion. "With the right support and savvy, we are positioning CoolHub to continue to spread beyond IMSA's walls, becoming a widely used platform for innovative collaboration throughout Illinois and beyond," said Britta McKenna, Chief Innovation Officer at IMSA. **360**

## ONLINE LEARNING:

“Progress is impossible  
without change,

**MSA** is always changing, never forgetting exactly why the state took that leap over 27 years ago to fund an Illinois STEM school. Encapsulated, IMSA exists to deliver advanced STEM teaching and learning opportunities to its residential students and to the interested students and educators throughout Illinois.

Online Learning at IMSA is evolving at a rapid pace, helping to lead the charge expanding IMSA's ability to consistently deliver more and add value to these edicts. Spreading IMSA's proven teaching and learning pedagogy, online learning is also challenging and developing IMSA's faculty in many beneficial ways.

This year multiple online courses and blended programs are being offered. They include courses in mathematics, English, research and inquiry, a teacher candidate institute and others. Below we feature some of these programs, the learning that occurred, and successes.

IMSA's English department aspired to create a class for rising juniors, students who have seen what English classes demand and who need more practice in the conventions of academic writing. They developed a four-week, online course that IMSA students could participate in from anywhere. The course focused on thesis statements, paragraph structure, and quotation integration. Students engaged in group discussions, online research, peer editing, and online quizzes. There was quite a high demand for the Summer Writing course, which originally offered 24 positions, but had more than double that number interested.



While the feedback from surveys is still under analysis, English faculty experienced that most students were highly thoughtful with their online work. Students enjoyed the questions and arguments they were asked to ponder and many chose very challenging topics to research and write about.

There were challenges. Some students lagged behind, which made follow-up more difficult. A change for next year includes adding an application process for the course to ensure commitment from interested students.

“This course will also eventually help IMSA reach out to other students around our state who may not have the opportunity to engage in an academic writing course,” said Dan Gleason, Director of Academic Programs and English Faculty.

The RISE course at IMSA is already reaching out to students outside our walls by offering students in grades 9-12 a year-long research project experience. RISE (Research Inquiry Skills and

and those who cannot  
change their minds,  
cannot change anything.”

– George Bernard Shaw

Experimentation) is intended for students who are interested in pursuing a higher-level, year long, in-depth study of a science topic of their choosing. This course is now giving over 40 students the opportunity to participate in the community of scientific research and scholarship.

RISE is so popular a second section had to be opened to accommodate all registrants. As of this writing, there have been no students who have dropped, a strong indicator of student engagement.

“Students are currently on module five and we continue to be optimistic about retention,” said Jacki Naughton, RISE Faculty.

“RISE is the single largest start to an online course that I have ever experienced, even when working with a six-month runway for marketing. Online Learning and Marketing and Communications worked together to fill the RISE courses in just three weeks!” said Frank Tomsic, Director of Online Learning for IMSA.

“RISE is personalized learning exemplified, as every student is doing something different for their research project, something they chose,” added Ms. Naughton.

If you would like to be an e-mentor for the RISE course, contact Jacki Naughton at 630-907-5913 or [jacnau@imsa.edu](mailto:jacnau@imsa.edu).

While we dream of the summer past, the summer math camp at IMSA had students learning before they even arrived. Faculty know that students who attend this camp arrive with varying experience levels. What could they do to get all learners closer to the baseline and have a more valuable camp experience for everyone? Develop an online pre-camp, of course.

When online summer math pre-camp debuted in 2012, it didn't make a big splash. But with further data analysis, faculty realized some students got quite a lot out of the pre-camp. This past summer, online pre-camp was highly successful. It was voluntary and 30 students out of the 44 who were registered for summer camp elected to participate.

“I was not an online teaching enthusiast, certainly not before this experience, but this pre-camp convinced me we should be doing even more. We should expand into other programs,” said Dr. Noah Prince, IMSA Mathematics Faculty.

“It's scary to try and create an online course for the first time. In class you can correct your mistakes right away, but online you have to pay more attention to what you are laying out and doing, which is incredibly

important for the curriculum as a whole. Forcing yourself to work in this platform is really powerful. It makes IMSA classes stronger as well," added Dr. Prince.

Teachers were not exempt this year from IMSA online learning either. Teacher Candidate Institutes (TCI) went to a blended classroom model, where some of the pre-work was done online prior to the two-week program.

TCIs offer teacher education students (TCs) in Illinois an opportunity to encounter a wide range of STEM instructional activities from lesson planning and design to teaching and assessment of student learning in a mentored environment. The program also introduces TCs to IMSA's constructivist approach to pedagogy, with an emphasis on inquiry, problem-centeredness and integrated ways of teaching and learning.

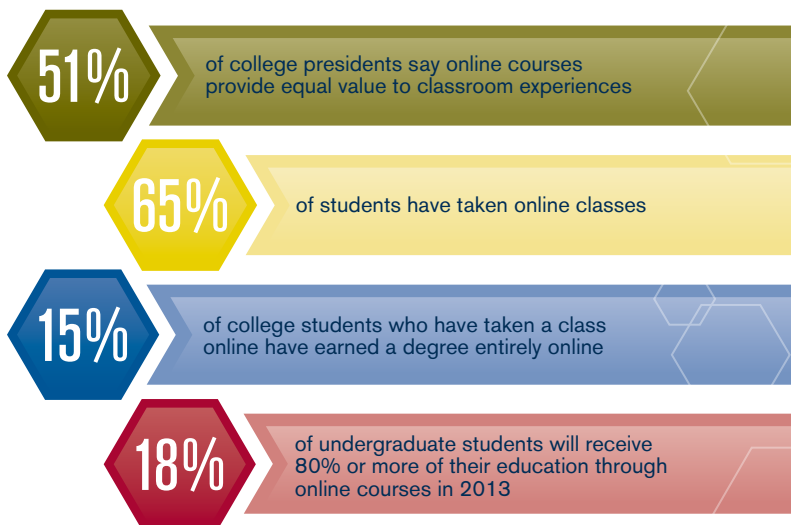
Initial instruction took place online. Then instructors met, in-person, with the TCs to review and practice the curriculum and activities they would teach.

"This was a fiscally responsible way to start this program. It gives the TCs the immediate opportunity to practice a hands-on approach to teaching and learning that's much more inquiry based. The TCs are the guides, teasing students along as they learn," said Dr. Susan Bisinger, Program Director, Inquiry Institutes.

"We've served over 50 TCs in the program since its inception. The TCs really liked the blended program because this year they could go

through it at their own pace. They were able to see everyone's work and collaboratively pick and use the best," added Dr. Bisinger.

There's no question the development of online experiences and resources is at a fever pitch at IMSA. More online programs being offered or developed at IMSA will be featured in our digital IMSA360 magazine at <https://sites.imsa.edu/IMSAS360>. **360**



## STUDENT/STAFF ACHIEVEMENTS

### 48 IMSA Students Named National Merit Semifinalists

The National Merit® Scholarship Program recently named 48 semifinalists from IMSA. IMSA semifinalists represent 30 different communities throughout Illinois. Approximately 24% of IMSA's senior class were recognized as semifinalists, in comparison to less than one percent of the average school to enter the nationwide competition.



### Sr. James Tao Wins Gold at International Math Olympiad

Senior James Tao outdid himself this summer, winning a gold medal competing for Team USA at the International Mathematics Olympiad (IMO). This is perhaps the biggest international competition in all of high school mathematics, and in the 40 years the IMO has existed, only about ten students from the Chicago area have been named to Team USA, let

alone won gold. Tao competed on the 23rd and the 24th of July in Santa Marta, Columbia, against 600 of the world's most talented students, representing more than 100 countries. James Tao helped lead Team USA to an impressive third overall in the competition.



### Jr. Anton Karpovich Gets 1st in U.S. Geography Olympiad - Wins Kyoto Trip to Represent USA

Junior Anton Karpovich blew away the competition in the United States Geography Olympiad on April 26-28, in Arlington, Virginia. He took first place in all three categories, which included a multiple choice, short answer, and a written exam. Consequently he took first place overall in the competition, which earned him the right to represent Team USA at the 2013 International Geography Olympiad (iGeo) in

Kyoto, Japan, on July 30th -August 5th. He was also awarded \$1500 toward the cost of the trip.

### Faculty-Turned-Principal Branson Lawrence Wins DiscoverE Educator Award

Before IMSA Science Faculty member Branson Lawrence was named Principal this summer, he was selected as one of only eight runner-ups in the nationwide 2013 DiscoverE Educator Recognition Awards. The DiscoverE awards shine a spotlight on educators who are inspiring innovation by helping students discover engineering. As a result of the honor, Lawrence received a \$500 award, a 3M Shoot 'n Share digital camera, and a 3M gift pack of classroom supplies.



## IMSA Alumni Association Cabinet 2013-14

### OFFICERS

#### President

Melvin Bacani '90

#### Vice President

Amanda Murphya '03

#### Secretary

Claire Wang '93

#### Treasurer

Melissa Comenduley '90

### AT-LARGE MEMBERS

Samuel Berger '07

Tiffany (Mayo) Chambers '99

Reginald Champagne '02

Kevin Colby '95

Cati Crawford '09

Theresa Geiger '07

Matthew Isoda '02

Amy (Timm) Kinney '95

Sarah McPike '07

Stephanie Song '06



Over the last academic year, IMSA and the IAA have seen alumni reconnect at record-setting levels. The number of alumni who donated to the IMSA Fund last year hit an all-time high. Our combined efforts with the Development Office resulted in a record 16% alumni participation – surpassing our goal of 15%. In addition to monetary donations, the number of alumni who volunteered increased to over 400, more than double the number from last year. The increase is a direct result of our expanding programs that help connect alumni back to IMSA through student programs.

Along with the increase in alumni involvement, there have been numerous other changes for IMSA and the IAA. In addition to newly-appointed President Catherine C. Veal and Principal Branson Lawrence, IMSA also has a new Coordinator of Alumni Relations. Lisa Hellman recently joined IMSA as the primary staff liaison to alumni. While we will miss Carolyn Johnson's involvement on a daily basis, Lisa brings a wealth of experience to the role, and we look forward to introducing her to the alumni community. I am confident that Lisa will help elevate our combined efforts between alumni and IMSA to a new level, and I look forward to her new perspectives.

In July, the IMSA Alumni Association (IAA) also elected a new cabinet. With the energy and enthusiasm of the new members, this year's focus will be to infuse new ideas into our established programs connecting alumni to other alumni, students, and IMSA.

While change is never easy, I view change as a way to reassess and take the opportunity to imbue new ideas and grow. I am looking forward to working with all alumni in the coming year and seeing the positive effects of change. To learn more about IAA activities or to get involved, please visit the IAA website at <http://www.imsaalumni.org>. **360**

### Melvin Bacani '90

IMSA Alumni Association President  
[president@imsaalumni.org](mailto:president@imsaalumni.org)

### Ann Chen '93

was named as one of "Chicago's Top 40 Under 40" legal professionals by *The National Law Journal*.



**Nominate an Alumnus for an IMSA Alumni Award** Nominations for the 2014 Board of Trustees Alumni Awards are being accepted now. Visit [www.imsaalumni.org/awards](http://www.imsaalumni.org/awards) for more information.

## ALUMNI notes

**Gabriel Demombynes '89** is a senior research economist with the World Bank and recently moved with his wife and daughter to Hanoi, Vietnam, after spending three years living in Nairobi, Kenya.

### Ramez Naam '90

published his second novel, *Cruz*, a near future sci-fi novel and sequel to *Nexus*.



### Ellen (Landers) Levisetti '92

welcomed daughter Colette Annelise Levisetti on August 21, 2013. She joins older sister Allegra Cecily, born in 2009.

### Julia Stamberger

'92, CEO of GoPicnic Brands and GPConcept Labs, supported IMSA Alumni Weekend with a generous donation of ready-to-eat GoPicnic meals for all guests.





## ALUMNI notes

**Jennifer Ellis Ward '93** and Ken Ward welcomed Nicolas Michael Ward on April 25, 2013. He joins big sister Liliana (born December 2011) in their home in Boston.



**Jenny Deller '94**, writer/director of Future Weather, spoke at this year's Convocation ceremony. **Alan Shramuk '12** played percussion in the featured musical piece.

### Sam Yagan '95

was named one of the "Top 100 Most Influential People in the World" by *Time Magazine*. He was also dubbed one of this year's hottest rising stars in *Fortune Magazine's* "Top 40 Under 40" list.



**Gita Krishnaswamy '96**, a curriculum coordinator for the Kent School District in Washington, was awarded a grant from the U.S. Department of Education's Race to the Top Fund to implement a long-term Problem-Based Learning initiative, in partnership with IMSA.

### Ande Croll '97

and Amos Ngola were married on August 3, 2013. Alumni in attendance included: matron of honor Amanda (Leonard) Shanbaum '96, Maciej '97 and Christie '97 (Bruley) Babinski, Ben Chelf '96, Joanna (Messer) Jordan '97, and Doug Pratt '97.



**Joanna Messer '97** and Tom Jordan, former IMSA faculty, were married on August 17, 2013.

**Jennifer Urbauer-Parsons '98** and Jeremy Parsons welcomed daughter Sagan Rae Lanette Parsons on September 4, 2013. She joins older brother Xavier, born in 2008.

**Clare Marie Myers '99** is pursuing her long-held dream of starting a clothing line for "tomboys and adventurers." Her Scout's Honor Clothing Company is based in San Francisco.

**Pearl Phaovisaïd '99**, a veteran Black Hawk Army pilot and recent graduate of the Harvard Graduate School of Education, was featured in an *Ed. Magazine Extra* video where she talked about the intersection of Buddhism and military service and technology in education.

U. S. Air Force Captain **Kenyatta Ruffin '99** was promoted to the rank of major in a ceremony on September 1, and is a "new generation" member of the Chicago "DODO" Chapter of the Tuskegee Airmen Inc. He is also the recipient of the Tuskegee Airmen Central Region's 2013 Distinguished Service Award.

### Jeff '00 and Lacey '01 (Langguth) Margolis

welcomed daughter Ava Grace Margolis on July 22, 2013.



**Katrina Herrmann '01** and **Lavina Jadhvani '01** worked on the production of Shakespeare's Twelfth Night at the Oak Park Festival Theatre this summer. Jadhvani was the director and Herrmann served as the stage manager.

**Michael Pawlowicz '05** was recently ordained a Catholic priest.

**Wei Luo '07** successfully competed in the 2013 USA National Wushu Team Trials and won a position on the 2013-14 USA National Wushu Team. Held every two years, the Team Trials bring together

the country's best athletes in Wushu, or contemporary Chinese martial arts (commonly called Kung Fu). Only the top three athletes from each category qualify for the national team. As a member of the national team, Wei will represent the United States in international Wushu competitions over the next two years.

### Sarah Lightfoot Vidal '08

was awarded a Fulbright Scholarship to work in Concepción, Chile at the Centro de Investigación de Polímeros Avanzados (CIPA) in collaboration with the Functional Polymers department at the Universidad de Concepción. Her project focuses on the development of a polymer blend of Polyhydroxyalkanoates (PHA) for wound healing applications. Sarah is a B.S./M.S. student at Drexel University, and plans to pursue a Ph.D. in biomedical engineering.



**Shilpa Topudurti '10** is the President of the Students' Association Government at the University of Rochester. A senior majoring in molecular genetics, she is the second female student to be elected, and the first woman to hold the position in the last 15 years.

**Dane Christianson '11**, a student at Illinois Institute of Technology, created the X-Cube, a more complicated version of the Rubik's cube. Dane's funding goal was surpassed using Kickstarter, and the X-Cube was selected as a top 100 finalist for this year's Chicago Innovation Awards.

## What's New in Your Life?

Submit your class note online at:  
[www.imsaalumni.org/notes](http://www.imsaalumni.org/notes)

## 2013 IMSA FUND<sup>+</sup> ANNUAL REPORT



# 16 + 9 + 59 = \$10 million?

Letter from IMSA Fund Board President  
**John Hoesley '89**

## IMSA Fund for the Advancement of Education

### What is the IMSA Fund?

The IMSA Fund for the Advancement of Education is a 501(c)3 not-for-profit organization that raises donations from alumni, parents, friends, faculty/staff, businesses and foundations and uses that money to support the programs and projects of IMSA.

### How do your gifts make a difference?

Many supporters of IMSA give to the Annual Fund. These unrestricted gifts allow the leadership of IMSA to use the funds for the areas of greatest need and highest priority. Last year these gifts funded scholarship awards for students and faculty to travel across the country and across the world competing in math contests, presenting research at conferences, and visiting other similar institutions in China. Gifts were also used to help student activities in the residence halls, fund graduation ceremonies, enable minority and rural students to learn about IMSA, provide scholarships to summer camps at IMSA, and obtain new dorm furniture, just to name a few things.

Other donors gave gifts to specific programs and projects, such as the Energy Center, the Robotics team, or our FUSION program that provides math and science enrichment for students and teachers across the state, for example. All of these gifts are very much needed. Thank you for supporting the students, faculty, staff, and programs of IMSA! **360**

**16** +9+59 = \$10 million may seem like a poor equation for a renowned math and science academy but it makes perfect sense, trust me. The State of Illinois has generously begun to provide funding for improvements to IMSA's 30-year old facilities. More than \$6 million is being provided toward renovating our residence halls, plus another \$3.5 million for long-needed repairs to our roofs. Almost \$10 million in funding is remarkable!

While many factors account for this turn of events, you – IMSA's supporters – played an important role that you may not realize. At the beginning of last year we asked our current parents, alum parents, and alumni to please help us send a message to our state legislators. We needed you to show that you are truly grateful for the education and life experience that IMSA provided. One way to do that is through donor participation. And you responded like never before with record participation levels from alumni (16%), alumni parents (9%), and current parents (59%). 16+9+59=\$10 million.

The dollar amounts were significant as well. Gifts from alumni totaled more than \$200,000 and gifts from all parents more than \$150,000. We even had single gifts of \$25,000 from a parent and \$100,000 from an alumnus!

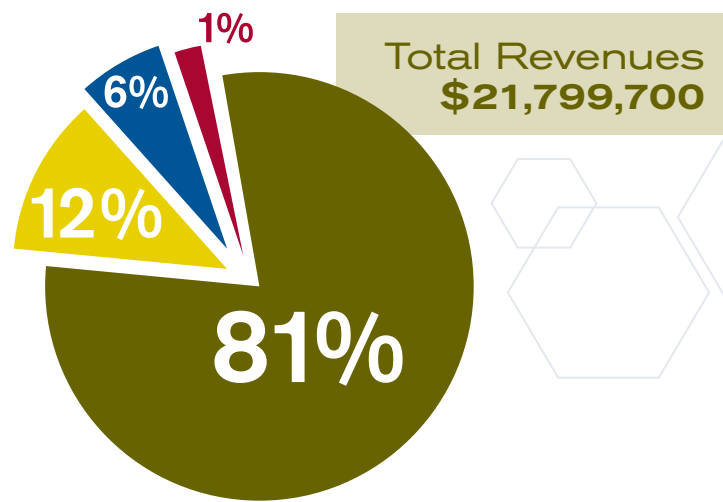
State legislators took notice. After three years of no funding increases followed by a \$600,000 decrease, this year IMSA was one of the few state institutions to receive an increased budget. And others took notice too. Friends of IMSA, non alumni and current student parents, gave more gifts and larger gifts than we have received in recent years. Some specifically cited the increase in parent and alumni participation as a driver in their decisions. If those closest to IMSA care – those one step removed will feel more inclined to begin caring too. 16+9+59=\$10 million.

This year our participation goals are 20% for alumni, 10% for alumni parents, and 66% for current parents. Yes, these are aggressive targets, but IMSA has always stood for doing things differently, doing things better. With your commitment, I feel confident that we can achieve or surpass these goals and send a powerful message to those who are watching. Your gratitude is important in ways you may not have realized. When we call or write please know that you can make a difference in your own way.

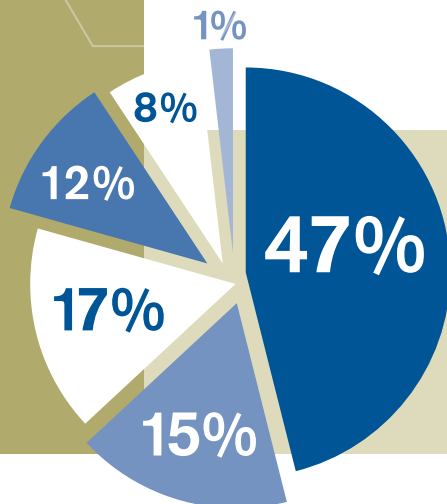
Thank you again for keeping IMSA the world's leading teaching and learning laboratory for imagination and inquiry. **360**

# IMSA and IMSA Fund for Advancement of Education

## Revenues and Expenses July 1, 2012 – June 30, 2013



### Current Year Gifts and Grants \$1,365,400



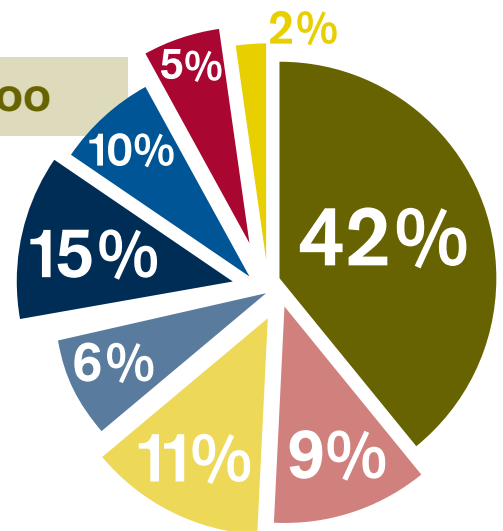
- State  
\$17,659,400  
81%
  - Program & Student Fees  
\$2,516,300  
12%
  - Gifts & Grants  
\$1,356,400  
6%
  - Prior Year Gifts & Grants  
\$267,600\*  
1%
- \*(donor directed for use in FY12)

- Private Foundations and Corporations  
\$636,000  
47%
- State & Federal Grants  
\$208,000  
15%
- Alumni  
\$230,000  
17%
- Parents  
\$155,000  
12%
- Friends  
\$109,000  
8%
- Faculty and Staff  
\$18,000  
1%

*Audited Financials available upon request.*

### Total Expenses \$21,799,700

- Residential Academic Program: \$9,145,400 - **42%** (faculty, library, counseling, nurse, etc.)
- Residential Student Activities Programs: \$2,019,000 - **9%** (co-curricular, sports, clubs, meals, trips, etc.)
- Extension Programs: \$2,385,400 - **11%** (serving students & teachers across Illinois and beyond with professional development and math & science enrichment)
- Technology: \$1,405,400 - **6%**
- Occupancy (for all programs): \$3,162,300 - **15%** (student housing, utilities, maintenance, grounds, etc.)
- Administration: \$2,139,000 - **10%**
- Marketing & Communications, Alumni & Parent Relations, and Fundraising: \$1,010,800 - **5%**
- Retained Gifts & Grants (per donors) for FY13 and transfers to Endowment: \$532,400 - **2%**



*Endowment and reserve funds invested, held, and pledged for the IMSA Fund = \$5,308,866*

# The Kaleidoscope Society



The Kaleidoscope Society honors donors whose lifetime giving level has reached **\$10,000 or more.**

These donors are also prominently displayed on the donor wall inside IMSA's main entrance. We thank you for your consistent and significant support of IMSA and its students.

## **Magenta Society (\$2,500,000.00 +)**

The Harris Family Foundation

## **Violet Society (\$1,000,000.00 +)**

The Grainger Foundation

## **Indigo Society (\$500,000.00 +)**

Anonymous (2)  
Abbott Fund  
Andrew Corporation and its employees  
AT&T  
Lloyd A. Fry Foundation  
Hansen-Furnas Foundation, Inc.  
Mr. & Mrs. Robert H. Malott  
Alfred P. Sloan Foundation  
Tellabs Foundation

## **Blue Society (\$250,000.00 +)**

Michael and Kay Birck  
BP America Inc.  
Caterpillar Foundation  
Virginia B. Cherry  
ComEd  
Paul Galvin Memorial Foundation Trust  
Grand Victoria Foundation  
The Hitachi Foundation  
Malott Family Foundation  
Motorola Solutions Foundation  
Toyota USA Foundation

## **Green Society (\$100,000.00 +)**

Anonymous (2)  
Albert Pick, Jr. Fund  
Alcatel-Lucent  
Ameritech-Illinois  
AMSTED Industries Incorporated  
Apple Computer, Inc.  
The Ball Foundation  
Bell and Howell Information and Learning  
Bell and Howell Foundation  
BP Foundation  
Samuel M. Cherry Memorial Charitable Trust  
The Crown Family  
Dillon Foundation  
Helen Thom Edwards Charitable Trust  
Jean R. Finley  
Ford Motor Company Fund  
Illinois Tool Works, Inc.  
David '96 and Shirley Kang  
Fred and Kay Krehbiel  
Mr. and Mrs. James R. Lancaster  
Dr. Stephanie Pace Marshall and Mr. Robert Marshall  
Michael McCool '91  
William G. McGowan Charitable Fund, Inc.  
J.P. Morgan Chase & Co.  
James D. and Marlene F. Pearson  
Pittway Corporation Charitable Foundation

Polk Bros. Foundation  
J.B. and M.K. Pritzker Family Foundation  
Robert Pritzker (Pritzker Foundation)  
Rauner Family Foundation  
The Searle Funds at The Chicago Community Trust  
Sentry Insurance Foundation, Inc.  
Underwriters Laboratories, Inc.  
William J. and Jane S. White  
Sam D. Yagan '95 and Jessica Droste Yagan '95  
Jarvis and Tracy Yeh

## **Yellow Society (\$50,000.00 +)**

3Com Corporation  
Applied Computer Technology, Inc.  
Archer Daniels Midland Foundation  
G. Carl Ball  
Susan Snell Barnes  
The Boeing Company  
Mr. and Mrs. G. Thomas Castino  
Walter and Virginia Cherry  
Community Foundation of the Fox River Valley  
Michael & Jacqueline Ferro and Merrick Ventures  
Fortune Brands, Inc.  
Hamilton Sundstrand Corporation  
Richard and Joanne Hansen  
Harris Foundation  
Greg and Ann Jones & Family Foundation  
Drs. Srinivas and Vijayana Jujavarapu  
KemperLesnik  
Nancy and Herb Knight  
The Lehman Brothers Foundation  
The Lumpkin Family Foundation  
Molex Incorporated  
JPMorgan Chase & Co.  
Novell, Inc.  
Precision Scientific  
Qwest Communications International, Inc.  
SAP America, Inc.  
The Seedlings Foundation  
Sigma Aldrich Corporation  
Michael Suh '97  
In Loving Memory of Scott Swanson '90

## **Orange Society (\$25,000.00 +)**

Anonymous (1)  
3M Foundation  
Duncan Alexander  
Ameren Corporation  
Bell Laboratories Library  
John F. and Carol Berger  
Blue Cross Blue Shield Association  
Borwell Charitable Foundation  
Caterpillar Inc.  
The Chicago Community Foundation  
Samuel S. Choi '89 and Karen Choi  
Comer Science and Education Foundation Fund at  
The Chicago Community Trust

Coopers and Lybrand  
Dr. Donald and Dr. Helen Edwards  
Fifth Third Bank  
Paul and Mary Finnegan  
The Forest Fund  
W.W. Grainger, Inc.  
The Mayer and Morris Kaplan Family Foundation  
Mr. and Mrs. Michael Keiser Donor Advised Fund  
Ellen and Leon Lederman  
Mallinckrodt Veterinary, Inc.  
Milken Family Foundation  
Richard M. Morrow  
Nayak Family  
NICOR, Inc.  
Mr. and Mrs. Donald E. Nordlund  
Nortel Networks  
Old Second Bancorp, Inc.  
The Pentair Foundation  
Rockwell Automation  
Rush-Copley Medical Center  
S & C Foundation  
In Loving Memory of Javal Shah '04  
Teacher Today Publications  
Toyota Motor Sales, U.S.A., Inc.  
UOP  
Donald C. Van Pelt, Jr.  
In Loving Memory of Mary Van Verst  
Varlen Corporation (Mr. Richard Wellek)  
Cathy and Bill Veal  
Waste Management, Inc.  
Winston & Strawn Foundation

## **Red Society (\$10,000.00 +)**

Anonymous (2)  
ABS Graphics, Inc.  
AmerenCIPS  
Ameren IP  
American Honda Foundation  
Mr. and Mrs. Roger E. Anderson  
Mr. and Mrs. Frank Angelillo  
Aramark Education  
The Associated Colleges of Illinois  
AT&T  
Aurora National Bank  
David Barr  
Marjorie Craig Benton  
The Grace Bersted Foundation  
Best Buy Children's Foundation  
Ms. Pamela O. Blackwell  
S & E Bramsen Foundation  
Dean L. and Rosemarie Buntrock Foundation  
Burroughs Wellcome Fund  
CBI Foundation  
Mr. and Mrs. Tien-Chi Chen  
The Cherry Corporation (Peter B. Cherry)  
ChicagoFirst  
Chicagoland Chamber of Commerce

Chicago Tribune Foundation  
 Dr. Harry and Mrs. Sue Chung  
 CMS Foundation  
 ComCorp, Inc.  
 Corporate Development Associates  
 Scott and Marci Crawford  
 John Deere Foundation  
 Dr. Richard F. and Dr. Linda Y. Dods  
 Susan K. Eddins  
 The Eli Nelson Charitable Gift Fund  
 Dr. and Mrs. Floyd English  
 FMC Foundation  
 Dr. Philip H. and Diana Francis  
 Antonio Gracias  
 Sheila and Woodie Griffin  
 GTE Foundation  
 Dr. Lee and Mrs. Jan Gurga  
 Terrence J. Hall Family  
 Matt Hellige '96  
 John Hoesley '89 and Jae Hwang-Hoesley  
 In Loving Memory of Bernard C. Hollister  
 Chelsy Ann Hopper '92  
 Bill and Cathy Howes  
 Patrick and Nancy Hurst  
 Impact II, Inc.  
 Mr. and Mrs. Robert S. Ingersoll Foundation

Intel Science Talent Search  
 Michelle and David Joerg '89  
 Eric N. Johnson '94  
 The Johnson Foundation  
 Kirti Kamboj '98  
 Mr. William K. Kellogg, III  
 John P. and Harriot Kelly  
 Mr. and Mrs. Teodozyj Kolasa  
 Ada '90 and Alan Kumar  
 David Kung '89  
 LaSalle Bank  
 Bernice E. Lavin Jumpstart Fund  
 Mr. and Mrs. Neal K. Levin  
 Charles & Ruth Levy Foundation  
 Lundbeck, Inc.  
 Mr. and Mrs. Fidel Marquez, Jr.  
 MK and DD McLerney  
 Vijay S. Menon '90  
 Mr. and Mrs. Fred D. Montgomery  
 Harle G. Montgomery  
 Lorin Murariu '97  
 In Loving Memory of Julie Namkung '91  
 Neha Narula '99  
 Howard and Thea Oberlander  
 The Oh Family (Andrew Oh, '89)  
 Stephen '00 and Pilar Paige

Ronjon Paul '89  
 The Quaker Oats Foundation  
 Reyes Holdings LLC  
 The Rocking JT Foundation  
 Matthew and Tracey Rossi  
 Samsung Electronics America, Inc.  
 Ed Saunders  
 James T. and Mary J. Schaefer  
 Stephen and Allison Schmitt  
 Sealmaster Bearings  
 G. D. Searle & Company  
 Mr. and Mrs. Charles Sharpless  
 Samuel K. and Mary Jacobs Skinner  
 Mr. and Mrs. Robert E. Spitzer  
 State Farm Insurance Companies  
 Paul Strasma '94  
 Eric F. Stuckey '93 and Mia K. Markey '94  
 Preston Swafford, Senior Vice President, ComEd  
 Phillips Swager Associates  
 Tellabs, Inc.  
 William A. and Mary VanSanten  
 Walgreen Co.  
 Bruce and Joan Winstein  
 Jasen Yang '96  
 Dr. Tito Yao and Mrs. Lilia Yao  
 Gloria Ysasi-Diaz and Andrew Surasky

# Muon Society

Samuel M. Cherry Memorial  
 Charitable Trust, created under  
 the Virginia B. Cherry Trust  
 Kevin '95 and Julia '96 Colby  
 Joshua A. Gerlick '99  
 Sarah "Sally" Strayer Levin  
 Dr. Stephanie Pace Marshall  
 and Mr. Robert Marshall

Maria Pacana '99  
 James and Marlene Pearson  
 Virginia Kathleen Ryan, J.D. '98  
 and Kathleen Theresa Hentsch  
 Michael Sloan  
 Scott Swanson '90  
 Cathy and Bill Veal

The **Muon Society** honors donors who have created a gift to IMSA through their **estate plans** (including bequests, trusts, or annuities of any size).

The Muon Neutrino was discovered by IMSA co-founder Dr. Leon Lederman, for which he won a Nobel Prize. The Muon is one of the longest lasting elements in the universe. Appropriately, gifts from Muon Society donors, often for endowment, are some of the longest lasting. To learn more about making a planned gift to IMSA please contact Paul Milano (630-907-5989, pmilano@imsa.edu).

**THANK YOU Corporations, Corporate Foundations, and Foundations** for your gifts to the IMSA Fund during the 2012-13 fiscal year. Thousands of students and teachers participated in IMSA programs supported by your contributions!

**Legend:**

\* Includes Matching Gifts  
 + Includes payments on pledges made in a previous year

Anonymous (1)  
 Abbott Fund \*  
 Allstate Giving Campaign \*  
 Ameriprise Financial \*  
 AMSTED Industries Incorporated \*+  
 Anheuser Busch Companies, Inc. \*  
 Aon Foundation \*  
 AT&T United Way  
 Bank of America Foundation \*  
 Baxter International, Inc. \*+  
 Blackbaud, Inc.  
 Blue Cross Blue Shield Association  
 The Boeing Company \*+  
 Boeing Gift Matching Program \*  
 BP America, Inc. \*  
 BP Foundation  
 The Capital Group Companies Charitable Foundation  
 Carnahan Daniels Foundation  
 Caterpillar Inc.  
 Samuel M. Cherry Memorial Charitable Trust

ComEd  
 Community Foundation of the Great River Bend  
 The Crown Family  
 Danada Veterinary Hospital, P.C.  
 Dart Foundation  
 Dillon Foundation  
 eBay Foundation Matching Gifts Program \*  
 Education Research and Development Institute  
 Helen Thom Edwards Charitable Trust  
 Ericsson Inc. \*  
 Exelon Matching Gifts for Education \*  
 Express Scripts, Inc. \*  
 Fidelity Charitable Gift Fund  
 Fidelity Foundation  
 Lloyd A. Fry Foundation  
 Arthur J. Gallagher & Co. \*  
 Paul Galvin Memorial Foundation Trust  
 GE Foundation \*+  
 Generations Fund \*  
 Goodrich Corporation \*  
 Google, Inc. \*+  
 W.W.Grainger, Inc. \*  
 Hansen-Furnas Foundation, Inc.  
 The Harris Family Foundation

Hewlett-Packard - Your Cause, LLC \*  
 HSBC - North America, Inc. \*  
 The IAC Foundation, Inc. \*+  
 IBM Employee Services Center  
 Ideal Industries Foundation \*  
 IDG Consumer & SMB, Inc. \*+  
 Illinois Conservation Foundation  
 Illinois Tool Works Inc.  
 Intel Foundation \*  
 International Business Machines  
 JPMorgan Chase & Co.  
 JPMorgan Chase Foundation \*  
 Mr. and Mrs. Michael Keiser Donor Advised Fund  
 Kirkland & Ellis Foundation \*  
 KJWW Engineering Consultants  
 Kunaland Productions  
 Lancaster Family Foundation  
 Leo Burnett  
 LexisNexis Cares \*  
 Lundbeck, Inc.  
 Mattel Children's Foundation Matching Gifts Program \*  
 Maxx Products International, Inc.  
 McDonald's Corporation \*  
 William G. McGowan Charitable Fund, Inc. +  
 Mentor Graphics Foundation \*  
 Microsoft Corporation \*+  
 Mizuho USA Foundation, Inc. \*  
 Morgan Stanley \*  
 Motorola Solutions Foundation \*  
 Network for Good

New York Life Foundation \*+  
 Newedge USA, LLC \*  
 Nissan North America, Inc. \*  
 The Pentair Foundation  
 PMMI Education and Training Foundation  
 Rauner Family Foundation  
 Raytheon Company \*  
 The Rock Island Community Foundation  
 Rush-Copley Medical Center +  
 SAP America, Inc. \*  
 Schwab Charitable Fund  
 Sentry Insurance Foundation, Inc. \*+  
 Society for Science and the Public  
 State Farm Insurance Foundation \*  
 Stillman Foundation Inc.  
 SVB Financial Group \*+  
 SVB Foundation  
 Takeda Pharmaceuticals North America, Inc. \*  
 Teza Technologies LLC \*  
 United Technologies \*+  
 Verizon Foundation \*  
 The Washington Post Company \*  
 Wells Fargo Foundation Educational Matching Gift Program \*  
 Wilson Hall (Sumter, S.C.)  
 The Xilinx Community Fund, a corporate advised fund of Silicon Valley Community Foundation  
 Yahoo! Inc. \*

# IMSA Fund Honor Roll of Donors

**Fiscal Year  
2013 Giving  
Societies**

**July 1, 2012 -  
June 30, 2013**

**The Fiscal year 2013 Giving Societies recognize the generous annual support of our donors by giving levels. These contributions support programs and services for IMSA students and staff, as well as other students and educators in Illinois and beyond.**

**Legend:**

\* Includes Matching Gifts  
+ Includes payments on pledges made in a previous year

**Titans (\$100,000 +)**

BP Foundation  
David '96 and Shirley Kang  
Rauner Family Foundation

**Founders Circle (\$50,000 +)**

Abbott Fund

**Trailblazers (\$25,000 +)**

Anonymous (2)  
The Boeing Company  
Samuel M. Cherry Memorial  
Charitable Trust  
ComEd  
Helen Thom Edwards Charitable  
Trust  
Paul and Mary Finnegan  
Lloyd A. Fry Foundation  
Paul Galvin Memorial Foundation  
Trust  
Illinois Tool Works Inc.  
JPMorgan Chase & Co.  
Mr. and Mrs. Michael Keiser  
Donor Advised Fund  
William G. McGowan Charitable  
Fund, Inc. +

**Pioneers (\$10,000 +)**

Blue Cross Blue Shield  
Association  
BP America Inc.  
Caterpillar Inc.  
The Crown Family  
The Harris Family Foundation  
Lundbeck, Inc.  
Dr. Stephanie Pace Marshall and  
Mr. Robert Marshall \*  
The Pentair Foundation  
Sam D. Yagan '95 and Jessica  
Droste Yagan '95  
Jarvis and Tracy Yeh

**Benefactors (\$5,000 +)**

Scott and Marci Crawford \*  
Hansen-Furnas Foundation, Inc.  
Ross and Joyce Hemphill \*  
John '89 and Jae Hoesley \*+  
Ada '90 and Alan Kumar  
Winjie Tang Miao '94 and Darryl  
Miao  
Mr. E. Glenn Rippie  
Sentry Insurance Foundation,  
Inc.  
Michael Suh '97 +

**President's Society (\$2,500 +)**

Ms. Pamela O. Blackwell  
Mr. and Mrs. Andrew Burash

Dart Foundation  
Dillon Foundation  
Education Research and  
Development Institute  
Paul and Judy Milano  
Dan '90 and Michelle Mueth  
Stephen '00 and Pilar Paige  
Mr. Jay Prasad  
Rush-Copley Medical Center +  
Andrew Surasky and Gloria  
Ysasi-Diaz \*  
SVB Foundation  
Cathy and Bill Veal

**Innovators (\$1,000 +)**

Anonymous (1)  
Sachin D. Agarwal '98  
Omar and Ishiani Ali  
Kavin Arasi '06  
P.J. '98 and Eric Balin-Watkins \*  
Charles Ballowe '97 \*  
Joe Beda '93  
Jerome Budzik '95 and Anna  
Testa  
Dr. John Burke and Ms. Vicky  
Sroczyński  
Leo Burnett Company, Inc.  
Dr. James and Mrs. Kathleen  
Carson  
Tom and Joan Castino  
Peter Zhe Chu '94 \*  
Community Foundation of the  
Great River Bend  
Marty DiMarzio '95  
Jane Fiala  
Dr. and Mrs. Peter Geldner  
Dr. Stephen Gieser and Dr. Ruth  
Williams  
Mr. Kenneth C. Griffin  
Matt Hellige '96  
Allen and Margaret Hensley \*+  
Ray and Barbara Herr \*  
James Herzog and Susan  
Sanders \*  
Andrew '00 and Elizabeth  
Hoesley \*  
Michele and David Joerg '89  
Kevin and Gail Kalinich \*  
Mr. William K. Kellogg, III  
Diana K. and Dr. C. Ronald  
Kimberling  
Usha Koganti  
John Koval '05 \*  
Kurt Krukenberg '95 and Charu  
Ramaprasad '95  
David Kung '89  
Daniel Lee '92 and Michelle  
Hart '92  
Hong-Chin Lin and Chifei Juang \*

Alan '94 and Christina  
Magerkurth  
Max McGee and Jan  
Fitzsimmons  
Vijay S. Menon '90 \*  
Joe Nolan  
Gautham and Shobha Nookala  
Tim and Anju O'Connor  
The Oh Family (Andrew Oh, '89)  
Junhyun and Inwha Park  
James and Marlene Pearson \*  
Kurt Krukenberg '95 and Charu  
Ramaprasad '95  
Al and Olga Pomella  
Kurt Revis '91  
Chuck Rickert '98 and Pooja K.  
Agarwal '01  
Schwab Charitable Fund  
Amanda Leonard Shanbaum '96  
Society for Science and the  
Public  
Jacqueline Pearl Steffen '08  
Paul Strasma '94 \*  
Eric F. Stuckey '93 and Mia K.  
Markey '94  
Gabe Suarez '90 \*  
Steve and Carrie Swerbenski  
Anil Thacker and Vidya Kotecha  
Aaron Thompson '99 and Marina  
Sivilay '99  
Rena and Matthew VanTine  
Jared Wadsworth '96 +  
Charles and Denise Yager \*  
Jasen Yang '96

**Ambassadors (\$500 +)**

Anonymous (5) \*  
Chris Andreoli '94 and Denise  
Gee  
Pramod Atluri '94  
P.J. '98 and Eric Balin-Watkins  
Andrew Beaver '93 and Renee  
Pazdan '93 \*  
Blackbaud, Inc.  
Mrs. Philip Cain  
Bangji Cao  
Dr. Sanjay and Mrs. Poonam  
Chatrath  
Mr. Kapil Chaudhary  
Andrew Dali Chen '96  
Ernest Chu '94 and Stephanie  
Chu  
Ray Dames '89  
Rick and Sabine Derse  
Duff and Julie Dimmig  
Ms. Marjorie Donath  
Amy Downey '89 and Phil  
Gartner \*

Mark, Carol and Alexander '09  
Drummond  
Susan K. Eddins  
Joy and Gerry Fernandez  
Patrick and Emily Furlong  
Katlyn Jie Gao '97  
Geronimo Garcia, Jr. and Dolores  
Estrada-Garcia  
Aaron Geldner '14  
Nathan Geldner '12  
Mr. and Mrs. Jim Gerry  
Rick '89 and Jen Gimbel  
Mr. and Mrs. Robert Golinvaux  
Lauren and David Gordon  
Mitchell Gordon '89 and Karen T.  
Kiener '89  
Groble Family \*  
Brian M. Grunkemeyer '94  
Dr. Lee and Mrs. Jan Gurga  
John and Barbara Hecker  
Mr. Roger Hohle and Dr. Helen  
Dane  
Jesse Hsu '93 and Annie Chong  
Hsu \*  
Lingqun Hu and Zhengqi Lu  
Illinois Conservation Foundation  
Ruozhou Jia '04  
Eric N. Johnson '94 and Ruth  
Goerger  
Trisha Jung '91 \*  
Terry and Brenda Kardatzke  
Mr. and Mrs. Don W. Kim  
Michael H. Kim '93 \*  
Stan '89 and Seonyoung Kim  
Kamal Kishore  
KJWW Engineering Consultants  
Nancy and Herb Knight  
David A. Knol '93 and Lora Knol  
Vadim and Yelena Kontorovich \*  
Jordan Miles Koss '89 and Susan  
Kim Koss  
Mr. Kevin and Mrs. Theresa  
Kovach  
John Koval '05  
Rosanna and Ray Lam  
Mr. and Mrs. James R. Lancaster  
Daniel Lee '92 and Michelle  
Hart '92 \*  
Tanya Leinicke '90  
Marcus and Anne Lieberman  
Emily Ling '14  
Matthew and Diane Magerko  
Mr. and Mrs. J. Fredric  
Magerkurth  
Thomas and Stephanie Marsh  
MK and DD McInerney  
Jim and Diana McNish  
Barbara Miller  
Dr. and Mrs. Najeeb Mohideen  
Andrea (Lauterbach) '94 and  
Scott Myers \*  
Tarun Nagpal '93 and Vanessa  
Gage '95  
G.A. and Aparna Naidu  
Julie Y. Namkung Memorial Fund  
Andrea (Croll) Ngola '97 \*  
Nneka and Ejikeme Obasi  
Michael and Barbara O'Brien  
J. Orloff '90 and Associates Inc.  
Dr. Paul and Mrs. Jongmi Park  
Aaron Parness '00  
Mr. and Mrs. Shashikant Patel  
Mr. and Mrs. Yogesh Patel  
David and Luzelena Perez  
Jacob R. Plummer '96  
PMMI Education and Training  
Foundation  
Matt Pritchard '93  
Kelly Jean Rabin '98 and Kevin  
Rabin  
Dr. Apichart and Mrs. Crystal  
Radee  
Dr. and Mrs. Frank Radosevich

John B. Randall '97 and Brook  
Haley  
Erin Roche '89  
Thomas Rooney '01  
Marsha and Robert Rosner  
Barry Schnorr '98  
Brian A. Sebbly '96  
Dr. Diana L. Sharp  
Mr. and Mrs. Charles H.  
Sharpless  
John and Pamela Simmons  
Ravi K. Singh '95  
Mr. and Mrs. Robert E. Spitzer \*  
Mr. and Mrs. Kenneth Spreitzer  
Mr. and Mrs. Robert D. Stillman  
Andrew Surasky and Gloria  
Ysasi-Diaz  
Jan and Susan Suwinski  
Suchon Tuly '93 \*  
Shouhao Wu and Zhi Yuan  
Anna Yusim '95  
Dave and Gina Zager in Memory  
of Scott D. Zager '06  
Peter and Betty Zhan

**Patrons (\$250 +)**

Anonymous (5)  
Mr. Reuel G. Abraham  
Donna and Bruce Ackerman  
Ashraf and Neema Ali  
Christine Banek '00 \*  
Grigor and Svetla Bantchev  
Bartos Family: Elizabeth '09,  
Thomas and Cynthia \*  
Mr. Eduardo and Mrs. Alejandra  
Bistrain \*  
Gabriel L. Black '93 \*  
Joanna '90 and Neal Black  
Harvey and Elizabeth Blau  
Joao Botelho \*  
Mr. and Mrs. Steve Bottorff  
Gottex Fund Management  
Brad Boyer '94  
William Bunnelle and Leslie  
Evans \*  
Flora Cai  
Marsha Carter  
Matthew D. Carter '07  
Ms. Marie Cerny  
Jenny Cheng '06 \*  
Stephanie H. Chang '07  
Frederick W. Chen '93  
Jenny Cheng '06  
Greg and Jannifer Chien \*  
Elizabeth Chung '93  
Wayne Cowlishaw and Mary  
Carhart  
Laura Dabbish '96  
Mr. John D'Arcy, Jr.  
Daihung Do '91  
Dr. Richard and Dr. Linda Dods  
Hongliu Du and Mindong Pi  
Joe and Ida Dunham  
Paul and Melanie Earle  
Anne Elliott '95  
Mr. and Mrs. Lorenzo Esquivel \*  
Brian '93 and Rita '94 Etscheid \*  
Mr. Gabriel Flores  
Mr. John and Roxanne Frey  
Mr. and Mrs. Richard Frey  
Raja and Yamini S. Gangavarapu  
Benjamin Gertzfield '97 and  
William Hamilton Strickland  
Mike and Kati Gleeson \*+  
Mr. Barry Glicklich and Ms.  
Katherine Lato  
Benjamin T. Go  
Dr. Benjamin '93 and Desiree  
Gold  
Ethan Gordon '13  
Gretchen E. Green, M.D.,  
M.M.S. '92  
Nita and Monte Groothuis

Neal Groothuis '97  
 Mark and Gayle Grunberg  
 Martha C. Guarin  
 Terrence J. Hall Family  
 Ravindra and Suneela Harsoor  
 Kathy He and the Wu Family \*  
 Leon Heller  
 Steve and Judy Hennenfent  
 Bob, Margaret, Connor, Molly  
 and Erin Hernandez  
 Sarah and Win Hindle  
 Mr. and Mrs. John J. Hoesley  
 James Holmes '03  
 Manxing Huang  
 Mr. and Mrs. Sorin Ignat  
 Kraig '95 and Sarah Jakobsen \*  
 Miyam Jankov '99  
 Dr. Mary Kalantzis  
 Brian Kambach '99  
 Hiechan Kang and Mikyung Kim  
 Valdimir and Yulia Karpovich  
 Vijay Karunamurthy '96  
 Joe '91 and Naomi Kestel  
 Rajesh Keswani '94  
 Ahsan and Anjum Khaja  
 Alok Khuntia '93  
 Anne L. Kinderman '95  
 Vinita Kishore  
 Takayuki Kohata '94 and Yoko  
 Kohata  
 Dr. and Mrs. Vasu Kulkarni  
 Julie Lauffenburger '03  
 Branson and Ann Lawrence  
 Apinya Lertratanakul '93 and  
 Alex Chang  
 Nathaniel C. Leung '99 and  
 Ruth Lin  
 Arthur Li '14  
 Jack and Brenda Lilley  
 Zheng-Tian Lu and Diyang Wu  
 Wei Luo '07  
 Rebecca Machalow '98 \*  
 Elise A. Marifian '07  
 Jack and Marie McEachern  
 Dr. and Mrs. Eric McLaren  
 Timothy A. Messer '00 and  
 Rosalie Messer  
 Don and Paula Meyer  
 Mr. Roger and Mrs. Therese  
 Moore  
 Ash Morgan '94 \*  
 Jill Mosshamer  
 Andrea (Lauterbach) '94 and  
 Scott Myers  
 Somasundaram Narayanan and  
 Geetha Somasundaram  
 Rowena Torres-Ordonez \*  
 Mr. and Ms. Mario Ortiz  
 Joselito and Diana Pacheco \*  
 Michael and Lynnette Palmisano  
 Connie Jung Park M.D. '01 and  
 Brian Park '01  
 Mr. and Mrs. Vinod Patel  
 Tony Pechi  
 Jacob R. Plummer '96  
 Dr. Yimin Qin and Dr. Jing Li \*  
 Mr. Narendra and Mrs. Gowri  
 Rao  
 Dr. and Mrs. Paul Reith  
 Badri Rengarajan '89  
 The Rock Island Community  
 Foundation  
 Dr. and Mrs. James Rydland  
 San Francisco Foundation  
 James Sanders '03  
 John and Ann Satter  
 Dale and Annette Schuh  
 Mr. and Mrs. Travis Scott \*  
 Brian A. Seby '96  
 Mr. James Shen and Mrs. Linda  
 Yu  
 Mark Simmons '05  
 Irene Sofil '99 \*

Amy Courtin Sohl '89 and David  
 Sohl  
 Mr. and Mrs. Rajendra Sonarikar  
 George W. Su '94  
 Christopher T.  
 Sukhaphadhana '97 \*  
 Prakash and Dinaz Tambe \*  
 Brian Tao  
 The Tennenhouse Family  
 Adam M. Theros '93 and Rachael  
 Theros  
 Richard R. Tung '93 \*  
 Stephen and Tammy Valentine  
 The Walders  
 Hong Wan and Derhsiang Hsueh  
 Claire C. Wang, M.D. '93  
 Sarah Warning '01  
 Angela M. Weis '03  
 Michael Yang and Carol Zhang  
 Jeremy and Jean Yu  
 Matt Zanon '97  
 Bob Zhang and Jane Liu \*

#### Associates (\$100 +)

Anonymous (25)  
 Nikhil Agarwal '01  
 Mr. Vinod and Mrs. Kalpana  
 Aggarwal  
 Olusola and Erewa Ajayi  
 Sherriff and Tameka Alli-Balogun  
 Paula and David Altekruse  
 Alaina M. Anderson '93  
 Arjunakani Arjunan and  
 Thangeswari Arjunakani  
 Dr. and Mrs. Kent Armbruster  
 Ramiro Arrez  
 AT&T United Way  
 Dr. MG and Doris Aung  
 Brian Baker '05  
 Jason and Karen Ball  
 Diana Tung Barnes '02 and Jason  
 Barnes '01 \*  
 Lizz Bartos '09  
 Jeanine M. Batterton '96  
 Christopher Beck '92 and Nicole  
 P. Aranas '93  
 Joe Beda '93  
 Mr. and Mrs. Steven Berger  
 Bud and Victoria Bergie  
 Julia de Caradeuc Bernd '94  
 Emyln Bertsche  
 Angwo Bian and Honmin Chen  
 Jean Bigger  
 Susan and John Bisinger  
 Kathleen (Ervin) '96 and  
 Jonathan Booth '96 \*  
 Mr. and Mrs. Brian Borecky  
 Kent Borecky '00  
 Jonathan A. Bragg '06  
 Doug and Charlene Brandt  
 Catherine Breckenridge '02  
 Mrs. Andrea Brody  
 Michael H. Brody '96  
 Gary and Julie Brown  
 Richard and Michelle Bubulka  
 Barbara A. Buchthal '93  
 Dr. Mary Budzik  
 William Bunnelle and Leslie  
 Evans  
 Bradley and Stephanie Byrd  
 Steven and Vanessa Byrd  
 William and Shannon Calice  
 Louis Camras  
 The Capital Group Companies  
 Charitable Foundation  
 Carnahan Daniels Foundation  
 Sara A. Carson '96 and Eric  
 Carson  
 Chris Caruso '89  
 Jen Cha '93  
 Gary and Laura Chandler  
 Ann H. Chen '93  
 Mr. Huayun and Mrs. Wei Chen

Mi (Amy) Chen '06  
 Yong Chen '02  
 Michelle Cheng  
 Nina Chinosornvatana '96 and  
 Phillip Kang  
 Mr. Swee Hock Choo and Mrs.  
 Kiang Lian Chin  
 Kevin T. Chu, Ph.D. '94 and Anna  
 Chiu, Ph.D.  
 Dr. Arnold D. Chung '89  
 Julie Ciota and Nathan Ciota  
 Kevin Clair '00  
 Crystal T Clark '97  
 Linda L. Cline  
 Elizabeth Cohen '97  
 Shan Colletti '03  
 John and Lynn Collier  
 Timothy Collins and Shannon  
 Price  
 Julie Comerford '98  
 George and Beth Concar  
 Mr. and Mrs. Charles Corrao  
 Nathaniel S. Covert '02  
 Ron and Cox  
 Steve Crutchfield '93  
 John Curtis and Karen Mauldin-  
 Curtis  
 Martin and Beth Daly  
 Anand Dash '98  
 Sophia Davenport '89  
 James and Julie Day  
 Derek and Jackie Dearborn  
 Hui Deng  
 Zhimin and Yanping Deng Family  
 Daniel DeUgarte '90  
 Richard and Laurie DiLorenzo  
 Xiangyu Ding '06  
 Gary and Lucinda Dittmer  
 Mr. and Mrs. Michael Do  
 Mr. Mingchun Dong and Ms.  
 Frances Fan  
 Drs. Jared and Maryann Dorn  
 Mykal Dortch '02 and Kathleen  
 Dortch  
 Tim and Rebecca Douglas  
 Ms. Ruth Dover  
 Julie Dowling '99  
 Matt Drake '06  
 James and Sheryl Droste  
 Karen Druffel  
 Jude and Julie D'Souza  
 Katie Duncker '97  
 Jim and Suzanne Eagle  
 Dr. Sherry R. Eagle  
 Jaime L. Eigner '96 and Marc  
 Eigner  
 John W. Ellingson '89 and  
 Anoinette Ellingson  
 Thomas and Kathryn Elliott  
 Patricia B. and Donald E. Elmore  
 Kaori C. Ema '03  
 Mrs. Elaine L. Emanicipator  
 Michelle Emanuel and Teodoro  
 G. Alonso  
 Julie May Eng '00  
 Heidi '95 and Anthony '95 Engel  
 Liza '94 and Anthony Escudero  
 Mr. William and Mrs. Regina  
 Etherton  
 James Wilcox Ethington '99  
 Dr. Michael Evans and Ms.  
 Suzanne Ginger  
 Kurt Ewen '89 and Kim Ewen  
 Michael and Tuly Faden  
 Dan and Linda Fane  
 Peter Fang '94  
 Megan Fast '01  
 Anne Catherine Feltovich '99  
 Paul and Joan Feltovich  
 Ms. Patricia A. Ferriter  
 Paul and Cindy Flynn  
 Robert Forler '05 and Samiyah  
 Siddiqui

Joyce and Martin Fornek  
 Jacob Foster '04  
 Dan Frakes '89 and Jennifer  
 Henderson-Frakes \*  
 Jill and Steve Franks  
 John and Kimberly Freund  
 Brad '96 and Irene '96 Friedman  
 Wendy Melissa Gable '01  
 Jack Gall  
 Ki J. Gang  
 Mr. and Mrs. Gary Garrison  
 Jake M. Gerstein '95  
 Dr. Zenebe Gete and Mrs.  
 Mantegbosh Yohannes  
 Dr. Edwin and Ms. Linda Goebel  
 Mr. and Mrs. Edictor Gonzalez  
 Carol Robinson and Art Gould  
 Thomas J. Gower '96  
 Sheila and Woodie Griffin  
 Matt Groch '93  
 Dr. Feng Guan and Dr. Yue Liao  
 Drs. Bitthal and Meena Gujrati  
 Alok and Abha Gupta  
 Luis and Jacqueline Guzman  
 Dr. Irfan Hafiz and Dr. Nausheen  
 Din  
 Wei Han and Rongjuan Yang  
 Charles and Robin Hannon  
 Tim Harms '92  
 Dr. Katherine M. Hashimoto '90  
 Greg and Sharon Hatz  
 Morgan Hawker '95  
 Sikander Hayat  
 Mr. Gregory and Mrs. Sophia He  
 Dr. and Mrs. Carl Heine  
 James and Paula Hellige  
 Cynthia and Eric Helm  
 Jonathan Helm '99  
 Tom and Ginny Helm  
 Dr. and Mrs. Leo Henikoff  
 Cathy and Dan Herdeman  
 The Hermes Family  
 William and Denyse Herrmann  
 Jamison A. Hill '06  
 Tom and Patti Hizek  
 Thomas and Margarita Hoffman  
 Matthew J. Holliman '93  
 Mrs. Victoria E. Hollister  
 James Holmes '03  
 Andrea Hong '97  
 Haiping and Jane Hong  
 Jianqing and Suethei Hong  
 Avery '97 and Michael Hoppa  
 Dave and Marian Hopper  
 Matthew G. Horr '93  
 Steve and Melissa Hrcek  
 Caiping Huang  
 Vanessa '93 and Ryan Hughes  
 Robert and Ellen Huxtable  
 Mr. Conrad Iandola and Dr. Sonia  
 L. Nelson  
 Mohammed Ibrahim and Karen  
 Fann  
 Stacia Ilchena '01 and Nick  
 Ilchena  
 Grigory and Mila Ioffe  
 Steven T. Isoye  
 Matthew M. Ito '04  
 August Jackson '93 and Barry  
 Clukey  
 Reginald Jackson '97  
 Mr. and Mrs. Nitin Jain  
 Tony and Sheryl Jedlinski  
 Mindy Jian '13  
 Jane Jih '99 and Eddy Chen  
 Juan and Claudia Jimenez  
 Zhongmin Jin and Ying Xiong  
 Radhika K. Joag '00  
 Mr. J. Larry Jobe  
 Anjali Johnson '00  
 Carolyn and Bill Johnson  
 Mr. and Mrs. Jay Johnson

Thomas '98 and Dana '98  
 Johnson  
 Michele Jonsson Funk '90  
 Alan and Harriet Josephson  
 Tashil Ju '98  
 Leslie and Michael Juby  
 Soon Yung Jun and Seon H.  
 Jun Eun  
 Adam Kalinich '12  
 Cliff S. Kane '95  
 Judy H. Kang '01 and Tommy  
 Mei  
 Arun Karumanchi  
 Jeffrey and Sheila Katz  
 Mr. Christopher Kauffman  
 Lee Kaufman  
 Charles Keaton '05  
 Jim and Marlene Keenan  
 Jim and Jean Keeney  
 Eric J. Keller '95  
 Garry James Kennebrew, Jr. '04  
 and Robbie Kennebrew  
 Judy Kenney  
 Bernard and Sheila Kestel  
 Ms. Angela Kieess  
 Alice Kim '98  
 Arnold Kim  
 Francis N. Kim '95  
 Han Y. Kim '94 and Aileen Kim  
 Jason H. Kim '91  
 Mr. and Mrs. Jason Kim  
 Juhee Kim '98  
 Yong and Hee Kim  
 Kathleen A. King '01 and Steve  
 Raciti  
 Elizabeth Kinsella '92 and Sean  
 Kinsella  
 Charlie Kinzer '03  
 Mr. and Mrs. Ravi Kiran  
 Sandra L. Kirmeyer and  
 Nathaniel Hausfater  
 Dr. and Mrs. Robert Knol  
 Terry Koo '99  
 Amanda (De Zutter) Kotlyar '97  
 Karen and Sheil Kottkamp  
 Melanie S. Kotys '95  
 Mr. and Mrs. Paul Krause  
 Raj Krishnan and Eswari Raj  
 Austin Krumpfes '91  
 Mr. and Mrs. Jerzy Kryczka  
 JaEun Ku and Yoon Lee  
 Samantha Laxman and Jayashree  
 Kumar  
 Usharani and Mohan Kumar  
 Drs. Michael Kuna and Julie  
 Nelson-Kuna  
 Mr. and Mrs. Matthew Kurian  
 Patrick Kutz '94  
 Mr. and Mrs. Dongsoo Kwak  
 Rosanna and Ray Lam  
 Sarah L. Lambert '03  
 Andrew Blake Langan '02  
 Sam Lao  
 Lucinda Lawson '98 and Joshua  
 Miller  
 Jon-Paul Leduc '91 \*  
 John and Grace Lee  
 Kyung-Un and Seon Lee  
 Mr. Sae Lee  
 Christopher and Christine Legan  
 Mr. and Mrs. Thomas Leonard  
 Youngsuk and Manvika  
 Lertratanakul  
 Nathaniel C. Leung '99 and  
 Ruth Lin  
 Rich and Esther Levey  
 Karen Stallman and Brian Lewis  
 Shawn Lewis and Theresa Szeto  
 Mr. Chengchang Li and Mrs.  
 Yunfang Gao  
 Demmaree Lilley Li '94  
 Mr. Pui Mun Lee and Dr. Lan Li

(Continued on next page)

(Continued from previous page)

- Mr. Zhigang and Mrs. Amy Liang  
 Aaron Lieber '92  
 Nicholas S. Lilovich '04 +  
 Jet-Sun '93 and Jennifer Lin  
 Emily Ling '14  
 Mary Lou Lipscomb  
 Ariel Liu '09  
 Mr. and Mrs. Chuan S. Liu  
 Dr. Guang Liu and Mrs. Sunny  
 Chen  
 Joseph Liu '03  
 Peter Ping and Susan Liu  
 David P. Loveland '06  
 Robert and Sarah Loviska  
 William and Donna Lubbecke  
 Aubrey E. Lutz '04  
 Sandy Lux '91  
 Mr. and Mrs. Javier Macias  
 Katherine Mackenzie '03  
 The Magyar Family  
 Elizabeth Malecha '90  
 Michelle Malenke  
 Timothy Mangan and Karen  
 Sample  
 Patri Marconi '98 and Andrew  
 Yin  
 Mr. Miguel and Mrs. Aurora  
 Marquez  
 Lisa Martin \*  
 Abraham and Luz Martinez  
 Ramiro and Maria Martinez  
 Walter and Shirley Massey  
 George and Gail Mavrogenes  
 Robin May-Davis '90  
 Jessica McAlear '00  
 Paul and Shannon McDermott  
 John Philip McFerrin '98  
 Maura E. McLaughlin '95  
 Dara and Gloria Meas  
 Amy Patricia Meek '98  
 Dr. Daksha Mehta  
 Darshan H. Mehta '94 and Swati  
 Mehta  
 Parthiv Mehta '92  
 Emily A. Mellott '91  
 Dr. and Mrs. Sukumaran K.  
 Menon  
 Mr. Daniel and Mrs. Muriel  
 Messer  
 Michuda Family  
 David Byung Min '96 and Megan  
 Moore Donohue  
 Brian Mirous '96  
 Gokula Mishra  
 Dale and Maria Mitchell  
 Mr. John and Mrs. Gail Mitchell  
 Jennifer Mo '02  
 Kara L. Molenhouse  
 Kirsty Montgomery and Chris  
 Hasselbring  
 Michael Montgomery and Peggy  
 McClanahan  
 Christopher and Diane Moreno  
 Howard and Jie Morris \*  
 Justus Morris '95  
 Stacey Resetar Mowers '99 and  
 Matt Mowers '98  
 John and Hema Mowli  
 Bin Mu and HaiLin Yan  
 Munjeti Family  
 Amanda Murphy '03 and  
 Richard Yao '03  
 Sivakumar Muthuswamy and  
 Anupama Ramamurthy  
 Mary Jane Myers  
 Scott and Anne Nagro  
 Arun Narang M.D. and Sunita  
 Narang  
 John and Jonel Near  
 John '94 and Julie Nelson  
 Penny and David Newton  
 Laurel Nolen '90  
 Pier and Barbara Oddone  
 Paula and Chris Kubilius  
 Joy R. Ott '92  
 Maria Pacana '99  
 Brian Page '11  
 Lucas '94 and Mariel Pain  
 Ann Pan '07  
 Pariti Family \*  
 Dr. Paul and Mrs. Jongmi Park  
 Tom Parkin and Tibby Murphy  
 Jeff and Barb Parness  
 Sandeep Paruchuri '08 \*  
 Mr. and Mrs. Babulal Patel  
 Dusiyant A. Patel  
 Mr. Hasit Patel and Mrs. Kiran  
 Patel  
 Mikin Patel '04  
 Monica Patel '13  
 Parimal and Nishita Patel  
 William Paterson '95  
 Mary B. Patterson  
 Matthew R. Pearl '94 and Connie  
 Hsu  
 Paul and Cynthia Pederson  
 Lynn Qin-lin Peng '02  
 Ronald and Kathy Petersen  
 Cari L. Peterson '09  
 Mr. and Mrs. Keith R. Peterson  
 Paul and Peggy Peterson  
 Greg and Sabrina Petesch  
 Joe and Michelle Pfeiffer  
 Mr. Jose Philip and Mrs. Maria  
 Mathai  
 Mr. David Phillips and Mrs.  
 Valerie Beech  
 Jeff and Jenny Phung \*  
 Michael and Joan Pierce  
 Mr. Socrates Ponnusamy and  
 Mrs. Sujatha Socrates  
 Sysounanh and Pattarawadee  
 Pradaxay  
 Christina L. Prested '00 \*  
 Jagdish and Vina Purohit  
 Dr. Yimin Qin and Dr. Jing Li  
 Walter and Carol Quandt  
 Michael A. Quick '97  
 Chris and Elizabeth Quigg  
 Robert Quimby '03  
 Eric R. Quinn '92 and Melissa  
 Quinn  
 Andrew Raatjes '97 and Erin  
 Raatjes  
 Mr. Dennis Rabe and Ms. Karen  
 Rubrich  
 Rajan Rajbhandari '91  
 Karen Rakers-Dowd '94  
 Ravi Ramakrishnan and Radhika  
 Srinivasan \*  
 Benjamin and Maria Ramirez  
 Caitlin Ramsey '03  
 Brian and Evelyn Randall  
 Ranjeet Rao '97  
 Sumit and Archana Ray  
 William and Celestine Reda  
 David '89 and Dawn Marie '89  
 Reed  
 Sendhil Revuluri '90 and Venu  
 Gupta  
 Jason Ribando '90  
 Jay and Jane Rich  
 Mr. Ronald and Mrs. Sandra  
 Richard  
 Gerard and Elizabeth Rickert  
 Aracelys Rios  
 Minji Ro '02  
 Shaun Alan Roach '01  
 Jason Rock '08  
 Timothy Roderick '03  
 Benjamin V. Rodrigues '07  
 Andres and Lynda Rosa  
 Mr. and Mrs. Barry Rosenberg  
 Erik '89 and Gloria Rothbaum  
 Pravin and Bharati Roy  
 Mr. Mark Ruffin  
 Pratyush Rustagi  
 Aquila Ryu '15  
 Gwan Ryu and Jae Shin  
 Davender Sahota '99  
 Mike and Judi Salkas \*  
 Natasha D. Sansone '06  
 Mr. and Mrs. Nitin Sarode  
 Sushant Satpathy and Ipsita  
 Mahapatra  
 Dr. Robert and Mrs. Carolyn  
 Sawicki  
 Jeff and Linda Schielke  
 Ernest and Denise Schirmann  
 Kyle Schirmann '08  
 Brandon Schlesinger '99 \*  
 Gerald and Diane Schulz  
 Mr. Jay Schwartz  
 Chuck and Laurice Sears  
 Polina A. Segalova, Ph.D. '01  
 Mr. and Mrs. Roger Seibert  
 Dr. Venkat and Dr. Uma Sekar  
 David and Stella Senning  
 Jessica R. Senning '02  
 Mr. Anil and Mrs. Anjna Sethi  
 Mr. and Mrs. Achyut Setlur  
 Mr. Nilesh and Mrs. Beena Shah  
 Ruiju Shen and Xuhong Shang  
 Laura Janine Sharpless '05  
 Meredith Shaw '96  
 Dr. Salman Sheikh and Dr.  
 Anooosh Salman  
 Chandra and Archana Shekara \*  
 John and Alice Shepard  
 Juris Shibayama '92  
 David Chen-yu Shih '97  
 Mr. and Mrs. Edward Shinn  
 Megan L. (Mandernach)  
 Shober '95  
 Jason W. Siefferman '99  
 Katie Siemens '05  
 Ann Simmons  
 Ajay and Shalini Singh  
 Mr. Vikas and Mrs. Anuradha  
 Sinha  
 Erin Slone '97  
 Mr. James and Mrs. Linda  
 Smedinghoff  
 Kelly Wojcik Smith '90  
 Mark A. Smith '89  
 Mr. and Mrs. Michael Smith  
 Thomas and Christine Song  
 Dr. and Mrs. Danilo B. Soriano  
 Steve and Linda Spencer  
 Ray '93 and Jane Stadt  
 Phil Stanton '03  
 David and Angela Stolzoff  
 Andrea Stonecipher '90 and  
 Family  
 Larry and Judy Strain  
 James and Gloria Studnicka  
 Lucas Sturnfield '03  
 Angela Suh '08  
 Mr. and Mrs. Joong Suh  
 Patricia A. Sullivan '95  
 Ramona Sullivan  
 Tracey Sullivan-Covert  
 Nelasari Sumali  
 Mr. Kalyanasubbu Sundaravelu  
 and Dr. Roselin Arunachalam  
 Katerina A. Swanson '96  
 Christopher E. Szucko '03  
 Mr. and Mrs. Prasad Talluru  
 Mr. Dongping and Mrs. Lucy Tan  
 Adam Taylor '90  
 John R. and Nancy Taylor  
 Dr. and Mrs. Rogers Taylor  
 Mr. and Mrs. William Teller  
 Hongyu Teng and Yiqing Chen  
 Adam E. Tenhouse '07  
 Prakash Thimmapuram and  
 Sasidevi Buchupalli  
 Chris and Tim Thompson \*  
 Glenys A. Thorstenson '92  
 Bruce and Barb Tietz  
 To Family  
 Drs. Deepti '95 and Veeral Tolia  
 Richard Tsai '90 and Cecilia Tsai  
 Michael J. Tu '04  
 Anthony Tucker  
 Jacek and Theresa Tyszkiewicz  
 Matt Unterman '93  
 Mr. and Mrs. Louis Vago  
 Tom and Janet Veihman  
 Anupam Verma  
 The Vimawala Family  
 David and Janet Walker  
 Aimee Walter '90  
 Mr. Ching-Tung Wang and Ms.  
 Julie Shi  
 Connie and Lawrence Wang  
 Ligong Wang and Xiao Song Ren  
 Zhibi Wang and Xiaoli Jiang  
 Joel Ward and Laurie Sauer  
 Winn W. Wasson '01  
 Alice C. Watson '90 and Peter  
 Watson  
 Suzanne Weber, M.D. '91  
 Raymond Wee '94 and Ann Wee  
 Tom and Marilyn Weisner  
 Dale and Kim Weitekamp  
 David and Susan West  
 Dr. Herman B. White  
 Tiffany White '02  
 Damian M. Wiest '94  
 Randall Winans  
 Vida Winans  
 Mr. Lukasz and Mrs. Malgorzata  
 Wojtaszek  
 Mr. David Wolfe  
 In Memory of Colin '08 - Dan,  
 Angela, Ryan '05 & Rory  
 Woods  
 Amanda V. Wozniak '99  
 Anthony and Debra Wrenn  
 Richard Wright  
 Mr. and Mrs. Chung Wu +  
 Jane Wu  
 Jim Castillo and Lisa Wu '92  
 Xuanhong Wu and Yanping Shen  
 Yawen Wu and Tianying Jiang  
 Gus Xinos '97 and Kelley Xinos  
 Hongbo Chen and Lichun Xu  
 Michael and Leah Xu  
 Xiaoliang Xu and Kathy Cai  
 Lingyun Pan and Wen Ye  
 Guna Yerrabolu '15  
 A. Clay Young '89 and Monica  
 Cline  
 Qian and Qiang Yuan  
 Mr. Andrew Yun and Ms. Soon-  
 Young Jeon  
 Christopher and Anita Zeifert  
 Timothy and Nora Zeller  
 Ms. Sharon G. Zelman  
 Dr. Steven J. Zelman  
 Jiao Zhang and De Yang  
 Jun Yue Zhang '08  
 Richard Zhang '06, Vivian  
 Zhang '12, Jiao Zhang and  
 De Yang  
 Song Zhao and Xiao Wang  
 Feng Zhou and Kaimin Xu  
 Mr. Yan Zhu and Mrs. Ying Qin  
 Mr. Radoslav and Mrs. Milena  
 Zlatanova  
 Marisa Zuskar '99  
 Peter Adamczyk '98  
 Mr. and Mrs. Michael Adams  
 John Frederick Bart Addison '01  
 Amanda J. Adeleye '04  
 Ruchi Aggarwal '11 +  
 Purusharth Agrawal '91  
 Yaw B. Agyemang '96  
 Jawwad Akhtar '05  
 Lisa O. Akintilo '11  
 Dr. Tunji and Mrs. Omolara  
 Akintilo  
 Mr. and Mrs. David A. Akstins  
 Susan Albrecht  
 Mr. and Mrs. Lyubomir  
 Alexandrov  
 P.J. Alfred '90  
 Soham Ali '13  
 Andrew Alonso-Emanuel '13  
 Jacob Ament '97 and Connie  
 Ellis Ament  
 Margaret J. Anderson '00  
 Michelle Anderson '97  
 Roberta Joy Anderson '94  
 Ryan Anderson '91 and Thao  
 Anderson '91  
 Tom Anderson  
 Cindy Angpraseuth '11  
 Anna Feltes Aquino '89  
 Katherine E. Arenas '11  
 Mr. and Mrs. Santos G. Arenas \*  
 Michael and Allyn Armour  
 Rebecca L. Arnal '89  
 Tasha Arvanitis '11  
 Michael Atten '12 +  
 Lydia Auch '13  
 Tim and Michele Auch  
 Jake Edward Ayala '10  
 Jack Aylesworth '13  
 Aylesworth Family  
 Adel Azzam  
 The Bacani Family  
 Megan Bacani '13  
 Jennifer Bailey '12 +  
 Karen Ballinger '95  
 Evan Balzuweit '10  
 Susan and Russell Banjavcic  
 David and Jeanine Baran  
 Mr. Randall and Cathy Barnes  
 Patricia L. Barnett  
 Chelsey Bayer '06  
 Betsy and Brad Beatson  
 Wesley Beck '13  
 Donald and Lorraine Beers  
 Jim Begley '90  
 Girlish and Vaishali Belsare  
 Steven P. Benario '04  
 Michael and Charlotte Bennett  
 Rachel Benoit '92  
 Samuel Berger '07  
 Richard W. Bergstrom, Jr. '94  
 Leah Berman Williams '93  
 Judy and Benedict Bernardo  
 Stephanie Bernardo '10  
 Mr. and Mrs. Joseph Bernier  
 Christopher J. Berry '96  
 Amanda S. Besinger '02  
 Shelly S. Bhanot '10  
 Shreyas Bhat '03  
 Paras D. Bhayani '05  
 Carol Knisley Bishop  
 Andre Bistrain-Diaz '13  
 Mr. and Mrs. Leland J. Blain  
 Justin Edward Blanchard '02  
 Michael and Mary Ellen Blanding  
 Mircea and Vali Bogdan  
 Rao and Rohini Bokka  
 Allison and Dave Boldridge  
 William Cliff Boldridge '08  
 Kora Bongen '04  
 Jorrell R. Bonner '07  
 Joseph Bonomo '91 and Ellyn  
 Stewart

**Supporters (Up to \$99.99)**

Anonymous (47)  
 Phillip and Dana Abraham  
 Jorge Acosta '13



- Robert and Kelli Borchering  
Ms. Cathy Boren  
Matt (Born) Bornski '03  
Sylvester Botelho '13  
Ty Bottorff '13  
John Bozarth '90  
Wesley Tomson Bradley '11 +  
Kevin and Laura Brady  
Jessica (Yokley) Brand '99  
Duncan Breedlove '13  
Jami Breslin  
Terry and Debra Broadwater  
Henry and Hiroko Brockman  
Kazami Brockman '13  
Dr. Sandra Boyce Broomes  
Ayun Brown '13  
Larry, Kim, Benjamin, Lauren  
and Emily Brown  
Mike J. Brown '90 and Amy  
Brown  
Nicole Brown '00  
Will and Jody Buergey  
Jordan McNair Burdine '05  
Vicki and Tony Burgholzer  
Charles R. Burke  
Christopher C. Burke '93 and  
Dawn Burke  
Claire Burke  
Ms. Debra Burtin  
Gregory and Althea Busby  
Ms. Brenda Buschbacher  
Mr. Steve and Dr. Ann Butcher  
Charles and Suzanne Butler  
Kendell Byrd '13  
Emily Camras '13  
Adam T. Carpenter  
Mary P. Carter '96  
George L. Chadderdon '89  
Lisa M. Chambers '97  
Alice Chang '13  
Jason Victor Chang '00 and  
Melissa Chang  
Kevin Chang '06  
Liyan David Chang '08  
Jennifer Chapin '94  
Ajay Chatrath '12  
Sylvie Chau '00  
Angela P. Chen '93 and Jamie  
Wilkie  
Audrey M. Chen '96  
Brian Chen '13  
Gary Chen '13  
Weiyue Chen and Jia Yi Zhu  
Mrs. Zhikun Chen  
Nathan Cheng '06  
Karen Chesley '98  
Brian H. Chien '13  
Kathleen Chinetti '13  
Chinetti Family  
Seong-Ah Marcella Cho '08  
Zi-Ning Choo '13  
Zafar Choudhry  
Dane H. Christianson '11 +  
Mrs. Julie A. Christman  
Henry Milton Chu '00  
Wei-en Chu '13  
Sharadyn Ciota '13  
Mike and Kathy Clair  
Vanessa H. Clark '00  
Kevin '95 and Julia '96 Colby  
Emily I. Coleman '04  
Mr. Brian Collender  
Brianna Collender '13  
Steven Edward Collins '89 and  
Sheryl Mackey, M.B.A.  
Melissa Comenduley '90  
Lindsey Conley '13  
Mr. Paul Conlin  
Bryce Corbett '13  
Mary and Chuck Corrigan  
Kerwin and Laura Crane  
Julianne Crawford '12
- David A. Crow '04  
Ramon and Cynthia Cruz  
Brian Cudiamat '96  
Mr. and Mrs. David A. Cuka  
Mr. John E. Czapllicki, Jr.  
Maggie Daly '13  
Logan Damiani '12 +  
Christine Darabaris '13  
Nancy and Robert Darnell  
Jasmine Davila '13  
Jennifer M. Davis '00  
Daniel M. Dean '07  
Trent Dela Riva '15  
Dennis and Liz Delfert  
Jenny E. Deller '94  
Robert C. Denne  
Pragasana Devaraj and Sukanya  
Natarajan  
Purva and David DeVoi  
Grace Di Cecco '13  
Harrison Dimmig '13  
Mr. Jian Zhang and Mrs. Yuxian  
Ding  
Mr. and Mrs. Jignesh Dixit  
Nicole Dixon '97 and Scott Dixon  
Logan Dodd '13  
Dr. Peter Dong  
Mary Frances Dorn '05  
Ed and Marcia Dowling  
Gregory Draves '91  
Don and Sharon Driscoll  
Yangbo Du '08  
Grace Duan '15  
Mr. Jack and Mrs. Anna Duan  
Danielle Ducharme '98  
Merik Ducker '13  
Sharon E. Duval '11 +  
Jessica L. Dy-Johnson '02  
Asher Edes '03  
Victoria Ehle '98 and John A.  
Ehle  
Carrie (Giordano) Eklund '99  
Mosab Elagha '13  
Sarah E. Elliott '03  
Kevin Emancipator '13  
Eric Timothy Engelhard '96 and  
Eva Bach Engelhard '96  
Pat and Sharon Ervin  
William Robert Erwin '11 +  
Kenzo Esquivel '13  
Victoria Etherton '13  
Ms. Jean D. Evans  
Fafara Family  
Richie Fafara '13  
Syed and Nariza Faheem \*  
James L. Faletti '94 and Debra  
Faletti  
Ruth and Dale Fast  
Natasha Lynn Fast '98  
Charles Christopher Felish '01  
Justin L. Feng '11 +  
Tian Feng and Baoyun Yin  
Karissa F. Fernandez '08  
Marissa A. Fierz '01  
Dr. Cynthia R. Fischer  
Kevin M. Flannery '04  
Laura T.S. Foote '03  
Scott and Jan Forler  
Josh Fornek '13  
Aaron Foss '99  
Nikitta Foston  
Daniel Francis '13  
Don and JR Lee Francis  
Laura Freund '01  
Blanca and Miguel Garcia  
Arjun Garg '13  
Dhaval Garg '03  
Michelle M. Garrison '93  
Scott J. Garvin '98  
Mr. and Mrs. James Gebis  
Theresa L. Geiger '07  
Colleen Geihm
- Jill Gengler '89  
Mary and Rich Gentile  
The Getz Family  
Matthew Aaron Getz '03  
Yvonne Gibson '98  
Bonnie Min Gier '89  
Mallory Giger '13  
The Giger Family  
Kurt Gimbel '93  
Michael J. Gleeson '10  
Mr. and Mrs. Anthony Glenn  
Elyssa Glenn '13  
Beatrice Go '13  
Tiy Martin Goddard '95 and  
Lynford Goddard  
Margot and Bruce Goldsmith  
Luis Gomez '13  
Austin Gonzalez '13  
Daniel and Yamilet Gonzalez  
Ms. Nancy Gonzalez  
Mr. Paul and Mrs. Linda Gottlieb  
Rajesh Govindaiah '92  
Vidya Govind-Thomas '09  
Mr. Ron G. Green  
Lee Groner  
Sarah E. Grothen '04  
Virgil and Wanita Grunkemeyer  
Manu Gujrati '94  
Krishna V. Gumidyalu '96  
Maria R. Gunaratnam '95  
Jin Guo  
Ashima Gupta '13  
Gaorav Gupta '96  
Kaushal Gupta '92  
Chris '90 and Beth '92 Hage \*  
Heather M. Haines '04  
Daniel Hall '97 and Mienna Meek  
Hall '97  
James and Donna Hall \*  
Holly L. Hamilton '95 and  
Anthony Hamilton  
Mr. and Mrs. Wilbur R. Hansen  
Nicholas Harker '05  
Sadia T. Harper '96  
Celeste Wright Harris  
Bruce and Greta Hartman  
Katie Havighorst '13  
Erin Hawley '96 and Evan McRae  
Paul Heaberlin '99  
Douglas Heintz '00  
Cheryl Heinz '89 and Family  
Riley Helm '13  
Edward Hennessy '90  
Ion Hentea  
Claire L. Herdeman '07  
Rachel Lynn Hermes '13  
Jose Hernandez '13  
Fidel Herrera and Family  
Larry and Deborah Herrman  
Katrina Herrmann '01  
Susan Heersema '93  
Wesley Earl Herron '11  
Miranda Herzog '12 +  
Natasha Hill '99  
Norman and Janel Hill  
Tom and Diane Hinterlong  
Alexandra Anne Hizer '10  
Mark D. Hoadley '03  
Heather Anne Hoff '07  
Rae Dane Hohle '13  
John R. Holmstrom '06  
Gerrad A. Holtz '94  
Kevin Hong '13  
Chelsy Ann Hopper '92  
Mr. Sean Hoskins  
Derek A. Houston '98 and Jami  
Lea Houston  
Katherine Lorentzen Hove '01  
Alisha G. Howell '04  
Ivelina Hristova '13  
Mr. Nacho Hristova and Mrs.  
Mariya Hristova
- Dr. Alan Hsu '93  
Feihong Hsu '98  
Jennifer Huang '13  
Jimmy Huang '13  
Michael Keenan Huffington '99  
Eric Nels Hultgren '08  
Jessica Lynn Hunter '10  
Seneca Hutson '13  
Tan Huynh and Huong Nguyen  
Joyce A. Hwu '03  
Amarachi Ibe '13  
Dr. and Mrs. Richard Ibe  
Adam Ibrahim '13  
David E. Ignacio '01  
Erika Ignat '13  
Dominic and Carrie Imburgia  
Taylor Imburgia '13  
Areto Imoukhuede '95  
Juan Inton '98 and Rocío Inton  
Matt Isoda '02  
Amanda H. Jablonsky '04  
Margaret Jacobs '93  
Gabriel William Jacobson '04  
Mr. and Mrs. Subbia  
Jagannathan  
Jesse T. Jang '02  
Jinit and Pankti Jani  
Julia Jennings '01  
Eun Ji Jeong '13  
The Jian Family  
Yun Guo and Mingxiang Jiang  
Glenn and Louise Johnson  
Mathew and Alice Johnson  
Morgan Johnson '13  
Terry and Sue Johnson  
Tim Johnson '03  
Joanna (Messer) Jordan '97  
Benjamin A. Jorns '03  
Tejas Joshi '13  
Drs. Srinivas and Vijayana  
Jujjavarapu  
Gina Jung '13  
William and Barbara Jung  
Mr. Sudhir and Mrs. Kavitha  
Kallu  
Sunjay Karan and Kanchan Mala  
Kaylee Karumanchi '13  
Connor Kasch '13  
Kauffman Family  
Kaylee Kauffman '13  
Samuel Kaufman '13  
Vivasvat Kaul '03  
John and Kristin Kazenas  
Ryan '93 and Aimee Keeney  
Andrew Joseph Keller '05  
Akash Kesari '13  
Ravi K. Kesari '07  
Elizabeth Darr Keserauskis '94  
Emil Khabiboulline '12 +  
Akram Khaja '13  
Arshia Khan '01 and Jeremy R.  
Boyens  
Mohammed and Rubina Khan  
Elaine C. Khoong '03  
Mr. John and Mrs. Kathleen  
Kiener  
Grace Audrey Kim '97  
Ms. Jinsook Kim  
Monica Kim '13  
Kathryn Kim '13  
Melissa Kim '13  
Nicholas Kim '03  
Sue Kim '13  
Keith Kimberling '13  
Tamora Kimmitt '91  
Toshio Kimura '95  
Mr. and Mrs. Mark T. Kinder  
Susan M. King '01 and Oliver  
King  
David '95 and Amy '95 Kinney  
Pirapat Kitipongpatana '14  
Tiffany D. Kitto '90
- David H. Klempner '02  
Christen Klochan '99  
Chris Knowlton '03  
Catherine Ko '07  
Tanya E. Kobyluk '91 \*  
Jonathan Koch '08  
Vivek Koganti '13  
Gerry and Marian Kopay \*  
Ankur Kothari '97 and Guinevere  
Kothari \*  
Brooke Kottkamp '13  
Mr. and Mrs. Jerzy Kowal  
Lauren R. Kozak '01  
Neil T. Krasovec '92 and Mila  
Krasovec  
Ms. Dorothy Krett  
JaEun Ku and Yoon Lee  
Anusha Kumar '10  
Dipen Kumar '13  
Mr. and Mrs. Krishna Kumar  
Nishita Kumar '13  
Sharad S. Kumar '05  
Sunder Kumar and Seema  
Sodhi  
Mr. Kevin J. Kunstman  
Vishnu Kurella '98  
Shannon Kurian '13  
Mark Kuruc  
Shannon Kuruc '13  
Joonil Kwak '01  
Kaska Kwiecien '13  
Mr. and Mrs. Jerry Kwiecien  
Ben Lai '99  
Joshua Lam '13  
Ming-Long and Gina Lam  
Lawrence and Valerie Lambe  
Elizabeth N. Lampe '02  
Elissa Larkin '99  
H.V. Ted and Sara Larkin  
Tammy Larson  
Sabrina Lato '13  
Branson Scott Lawrence '02  
A. Leahy  
Clare Leahy '13  
Mia Leckie '13  
Andrew Lee '10  
Jenny Lee '13  
Christy Lee '92  
Jeanne Lee, M.D. '03  
Jenny Lee '13  
Mr. King Ching Lee and Ms.  
Soming Lee  
Adam J. Leemans '09  
Linda Leslie  
Leung Family  
Jennifer F. Levin '01  
Samantha J. Levin '12 +  
Stephanie L. Lewis '02  
Grace Li '13  
Shelly Li '13  
Amy Li '04  
Claire Liang '13  
Kevin Lim  
Jason Lin '13  
Sharon S. Lin '95  
Emily Lindgren '13  
Brian A. Link '03  
Sarah Lisk '12+  
Dr. Thomas and Mrs. Pamela  
Lisk  
Christine Liu '13  
Mr. and Mrs. Chuan S. Liu  
Rebecca S. Liu '02  
Andrea Llenos '00  
Hweimin Valerie Lo  
David Lockhart, Jr. '90  
Kelly and Brad Lofgren  
Itzel Lopez '13  
Bin Lou

(Continued on next page)

(Continued from previous page)

- Lily Lou '13  
Wen-Ming Louh and Jenny Chang  
David and C.J. Love  
Joshua Love '13  
Heidi Lu '03  
Lucy Lu '01  
Peter Lu '12 +  
Zouyan Lu '02  
Yuhua Luo and Can Gong  
The Birmingham-Luther Family  
Terry and Rick Luther  
Corinne A. Madsen '11 +  
Chelsea Lynn '02 and Erin Maiero  
Alexa Maffei '13  
Raymond A. Magee, Jr. '01  
Amanda Magyar '13  
Wanda Mahoney '93  
Fernando and Matilde Maldonado  
Kathleen Theresa Malinowski '03  
Jenna Maloka '05  
Nolan Maloney '12 +  
Siri Manam '13  
Greg M. Manning '89  
Anuj Marathe '13  
Barry Marks and Nancy Sage  
Sue Marr '90 and Travis Marr  
Mr. Jozef and Mrs. Elizabeth Marszalik  
Lisa Martin  
Sarah Martin '13  
Stephanie Martinez '10  
Viviana Martinez '00  
Kyson Joseph Mathieu '08  
Mr. and Mrs. Shaji Matthews  
Trisha Youngquist Maurer '98  
Tiffany Mayo-Chambers '99  
Susan G. McAdams '89 and Kevin B. McAdams  
Mr. Caryl McCaulou  
Kristi and Michael McCaulou  
Erica McEvoy '99  
David and Monica McGovern  
Kevin and Mary McGregor  
John and Leslie McGuire  
John Mcguire '13  
Ms. Kathleer T. McHugh  
Ian S. McInerney '11  
William Keith McIntosh  
Cynthia (Westphal) McKendall '92  
John and Beverly McKeown  
Deckle and Pamela McLean  
Caitlin McMahan  
Sarah L. McPike '07  
Antonio Medina and Monica Segura  
Dawn Meisenheimer  
Mary Mench  
Anthony Mercado '13  
Chet and Hilda Meyer  
Eva Marie Meyer '13  
Katja Meyer '98  
Linda E. Meyer  
Timothy I. Meyer '92 and Emily E. Hostetter '92  
Jack Michuda '13  
Ms. Kerby L. Mickelson  
Ms. Erin Micklo  
Hannah Miller '12 +  
Mike and Renita Miller \*  
Sean Miller '03  
Jill Mitchell '89  
Dr. and Mrs. Amlan Mitra  
Ashwin Mitra '13  
Prabhat and Shiva Mittal  
Jessica Mo '13  
Mr. and Mrs. Vinod N. Mody  
Tahir Mohideen '13  
Masum Momaya '95  
Bertha A. Montoya  
Camille Moore '98  
Carrie and Kurt Moranz  
Mr. and Mrs. James F. Morgan  
Tiffany A. Morgan '00  
Nicholas P. Morley '00  
Robert Morphis and Heidi Hietanen  
Kevin and Jennifer Morris  
Mallory Arnell Morris '02  
Stanley Morris  
Allison Morrow '11  
Luke S. Moryl '07  
Nicholas H. Moryl '03  
Mr. Robert and Mrs. Clara Moses  
William and Luann Moth  
Mr. Narendar and Mrs. Savita Mothkur  
Kyle Mou '13  
Ann Catherine Mountz '92 and Chuck Mountz  
Mr. and Mrs. Gary K. Mui  
Eric Franklin Mulch, Esq. '98 and Beth Ebenstein Mulch  
Rebecca Joan Mundell '92  
Kirti Munjeti '13  
Dr. Kate Murray '99 and Charlie Corrigan '99\*  
Zsolt Nadas '99  
Kyle Pierce Naff '01  
Vamsikrishna Naidu '13  
Darshana Nair '05  
Dr. Sangjeong Nam and Ms. Seongyeon Cho  
Akhiil Narang '00  
Vishesh Narayan '00  
Scott Narimatsu '95  
Jean Catherine Near-Ansari '91 and Naveed Near-Ansari  
Andrew William Nelson '09  
Ms. Marilyn K. Nelson  
Mr. and Mrs. New  
Donielle N. Newell '00  
Mr. Sonny Nguyen and Mrs. Cham Tran  
Sharnique Nichols '93  
Dalia Nilles  
Mr. Fernando Noriega and Mrs. Jacinta Theobald  
Christopher Norris '13  
Sydney K. Null '03  
Dr. Luis Núñez  
Melissa O'Brien '11  
Ocola Family  
Benedicta Ojibah '13  
Georgianne Oman  
Patricia Oman '96  
Birce Onal '08  
Eric Ordóñez '12  
The O'Reilly Family  
Amy Leigh Orsborn '03  
Gary and Cindy Orwig  
Mr. and Mrs. Thomas Ott  
Sue E. Ouellette  
Skip and Peggy Palenik  
Daniel and Sylvia Pape  
Deokgeun Park '12  
Hae Jung Park  
David Park '13  
Drs. Yonghan and Helena Park  
Ashok and Neelima Paruchuri  
Susan Pasnick '96 and Jake Brinton  
Jeff Pasqualucci '00  
Bindi Patel '13  
Dhruv Patel '13  
Sameer Patel '92  
Shivani Patel '13  
Viveka Patel '13  
Bruce and Sue Paterson  
Keeva H. Payne '02  
Vanessa C. Pentangelo '02 and Anthony Pentangelo  
Sandy Perez '13  
Mr. and Mrs. Ventura Perez  
David Perkins '97  
Toni Petersen  
Mikayla Petesch '13  
Scott Pfister '89  
Jamie Pflasterer '94  
Joseph Phan '05  
Agnel Philip '13  
Robert and Kathy Phillips  
Zoe Phillips '13  
Sophia Pilipchuk '08  
Andrew Pipathsouk '06 +  
Alexandra Plattos '07  
Mr. Donald Pleas  
Patrick Sullivan Polk '01  
Arthur J. Pope, Ph.D. '01  
Atene Sotera Poskute '14  
Donald and Michelle Potempa  
Jen Poulsen '03 and Joe Bagley  
Douglas Pratt '97 and Erin Skene-Pratt  
Rep. and Mrs. Robert W. Pritchard  
Dwan Lamar Prude '97 and LaChelle Dione Prude  
Mr. Andrew and Mrs. Julia Pusey  
David Qasem '05  
Mr. Ang Qian and Ms. Qianlu Li  
Jorge Quero '12  
Irfan A. Qureshi '94  
Ashley Radee '13  
Kyle B. Rader '04  
Vishaka Raguveer '06  
Alexandra Sasha Rahlén '04  
David H. Raileanu '04  
Vijay Rajagopal '99  
Kenneth Rakers  
Kavita L. Ramakrishnan '03  
Uriel Ramirez '13  
Venkat Rangachari  
Saieesh Rao '13  
Deborah Linksvayer Rash '94 and John Rash  
Brooke Ray '13  
Srinivas and Manjula Reddy  
Mr. and Mrs. Raymond Reinke  
Anna Remis '97  
Paul and Vicki Remy  
Jennifer Ren '13  
Gemilo V. Resaba, Jr. '00  
Megan Reynolds '98  
Monica (Radosevich) Reynolds '04  
Scott and Sherry Reynolds  
Maria M. Rhodes '96  
Tony and Angela Richardson  
Tony A. Rippy '93 and Mary Catherine Rippy  
Shailushi Baxi Ritchie '94  
Sabrina Roberts '13  
Mrs. Jennifer Roberts-Puralesk and Mr. Daniel Puraleski  
Lucinda Roberts-Rehfeldt '90  
Sheri D. Robinson '93  
Mr. and Mrs. David Rock  
Mr. and Mrs. Brian Roderick  
Matthew '00, Timothy '03, & Jennifer '09 Roderick  
Jenny Roderick '09  
Matthew Roderick '00  
Aimee Wilczynski Rodriguez '99  
Frank and Elisabeth Rogers  
Michelle A. Rogers '06  
Andrea Ronkowski '00  
Reborta and Don Rosenberg  
Noah Rosenberg '93  
Paul Andrew Ross '97  
Aldo M. Rossi '10  
Isolina R. Rossi '10  
Magda and George Roth  
Mr. and Mrs. Peter Rotskoff  
Russell and Karen Rudd  
Alison Ruddy '01  
Michelle Rudolph '10  
Thomas and Sandra Rueger  
Ben Rugg '99  
Sandy and Ken Ruksakiati  
Ken and Lisa Runkle  
Natalie Runkle '13  
Mrs. Karen Ruscitti  
Savanna Rutas '13  
Virginia Kathleen Ryan, J.D. '98 and Kathleen Theresa Hentsch  
Joseph Sachleben and Nighth Razvi  
Kavitha Sagi '98  
Greta and Erney Salamando  
Chuck '93 and Lisa Saletta  
Sidra Salman '13  
Ricardo Sanchez and Alicia Jimenez  
Sarah Sanders '01  
Murali and Shailaja Santhanam  
Antonia Sargeant '99  
Allison S. Sass '90 and Christian Sass  
Justin Sass '13  
Elizabeth Schaefer '97  
David and Kristi Schell  
Erin '02 and Kevin '02 Schlee  
Randy Schlesinger  
Christian and Paula Schmidling  
Hannah E. Schmitt '10  
Madison Schroeder '13  
Scott and Jolene Schroeder  
Jean M. Schubert  
Jeannine Schulz '12 +  
Robert Schurz '13  
Evan Schwerbrock '10  
Devin Scott '13  
Sarah Scott '97  
Shawn '91 and Amanda Scott  
Christopher M. Sedlack '92  
Margot Seigle '05  
Priya Sekar '92  
Alexander P. Serrano '04  
Carrie Sha '13  
Ankur H. Shah '94 and Marissa Rubio  
Mehal Shah '11 +  
Rupen and Bindu Shah  
Urvi Shah '03  
David and Rebecca '02 Shane  
Joan Shang '13  
Kevin T. Sharp '04  
Richard Shen '13  
Dr. Xiaofa Shi and Mrs. Chunyun Liu  
Jack Shi '11  
Rae Shih '06  
Dr. and Mrs. Deepak Shukla  
Navika Shukla '13  
Maximiliano Silvestre '06  
Bailey Simmons-Brown '15  
Daniel Brian Sinars '92 and Cindy Renee Sinars  
Ravi K. Singh '95  
Ben '93 and Kelly Siron  
Ross Skelly '13  
Kyle Skoog '12 +  
Maura Slattery '13  
Robert and Cathlene Slowikowski  
Glen and Sandra Smith  
Sharon Smith '92  
Cliff '92 and Jen Sodergren  
Kalyani Sonarika '13  
Hyun Jin Song '12  
Lynn Sosa-Bergeron '94  
Samantha E. Spalding '06  
Eric and Michelle Sparks  
Megan Leigh Spencer '98  
Maya Srikanth '00  
Srbislav and Marija Stancov  
Mrs. Kimberly Steele  
Jeffrey M. Strang '91  
Alexander Stratton '13  
Wendy and Tom Stratton  
Karolyn Stromdahl '13  
Michael Stukel '00  
Nathan Suek '13  
Mary Elizabeth Sullivan '01  
Stephanie Sullivan '03  
Bledi and Kelly (McArdle) '01 Sulo  
Laurie Sutherland  
Sherry Sutphen  
Christopher Swan '96  
Katerina A. Swanson '96  
Hannah Swerbenski '13  
Trinh and Lien Ta  
Heather Taff '04  
Adekore Taiwo '13  
Arjun Tambe '13  
Lee Tang '13  
Van T. Tang '95  
Monty and Patrice Tarr  
Alistair K. Templeton '96  
Matthew Tennenhouse '13  
Robert and Denise Thain  
Lou and Mary Theodor  
Lloyd and Madeline Thieman  
Angelika Thomas  
Mr. and Mrs. Leonard Timm  
Lucas H. Ting '03  
Brendan Todd '02  
Bharath Tolappa  
Marge Tomasik  
Sydney Tomasko '13  
Andrew Torres '98  
Jennifer LeClair Townsend '06  
John and Jennifer Trewitt  
Riva Trivedi '13  
Jeff Truitt '89  
Mr. Dennis Tsai  
Derrick K. Tung '98  
Dr. and Mrs. Bruce Unterman  
Joshua Unterman '97  
Gaurav A. Upadhyay '96 and Smita Singh  
Vaibhav Upadhyay '03  
Jennifer Lanette Urbauer-Parsons '98 and Jeremy A. Parsons  
Mr. and Mrs. Antonio C. Valero  
Drew Van Pelt '98  
Vanessa R. Vardon '02  
Rohan Verma '13  
Rheanna Vimawala '13  
Hera C. Vlamakis '94  
Erik Volkman '03  
Heidi VonDeBur '13  
Mark and Deb VonDeBur  
Anisha Vyas '09 and Sonam Vyas '12  
Anil R. Wadhvani '07  
Nisha Wadhvani '04  
Caitlin Walczyk '13  
Samuel Walder '13  
Chris and Grace Walquist  
Christopher Walsh and Ellen Kaplowitz  
Dean and Nancy Walsh  
Mark and Sari Wancket  
David Xiwen Wang '13  
Gary Wang '11  
James Z. Wang '03  
Jeffrey H. Wang, M.D. '96  
John Jian Wang '10

Kenny Wang '11 +  
Lucy Wang '13  
Leo K. Wang '94 and Irma Wang  
Ryan Yuan Wang '08  
Yuanhao Wang '13  
Henry Ward '13  
Dr. Jesse and Mrs. Brid  
Wardlow  
Alan Michael Ware '02  
Aditi Warhekar '13  
Heidi Warning '13  
Joe and Deb Warning Family  
Jonathan P. Warnock '02  
Karen (Beilsmith) Warren '90  
Karna Warrior '11 +  
Ashley Washington '13  
Joseph and Rachel Washington  
Daniel Wenny and Wendy  
Gibbons  
Malia Wenny '13  
Bayly Wheeler '00  
Anita White  
Jessica (Peterson) White '94  
and Nathan White

Charles Whittaker '07  
Walter and Denise Wiebe  
Ellen Weiss Wiewel '97 and  
David Ian Sacks  
Michael Connor White '12 +  
Jaime Erin Devereaux Wiley '98  
Ian Wilkinson '13  
Matthew Williams '13  
Rebecca Williams '03  
Sebastian Williams and Karen  
Ray Williams  
Jonathan Wilson '96  
Michael R. Wilson '94  
Wilson Hall  
Arthur Wojtowicz Wit '02  
Jason Wong '92  
Grace Woo '02  
Sarah L. Woolsey '89  
Lori Brinkmann Worledge '90  
Mr. and Mrs. Gregg Worrell  
Ethan Wozniak '99  
Brent Wu '13  
Megan Wu '11+  
Rebecca Wu '13

Summer Wu '13  
Mr. Wei Wu and Ms. Guanhua  
Qian  
Linda J. Wylder  
David S. Xu '04  
Anita Xue '04  
Danny Yagan '02  
Keiko and Shinpei Yamakawa  
Sean Yamakawa '13  
Amy Weiran Yan '02  
Dunping Yang '04  
Kevin Yang '02  
Ying (Amy) Ye '05  
Emilie T. Yeh '06  
Andy Yeager '13  
Theodore Yeh '07  
Hyun Yeo  
Satya Yerrabolu '13  
Mark, Susan and Taylor '12  
Yost +  
Mr. Steve Zant  
Elizabeth Jane Zaretsky '10  
Earl I. Zaromb '95  
Robert Michael Zedric '08  
Emily L. Zeissler '01  
Rocio Zepeda  
Jennifer J. Zhang '13  
Kevin Zhang '13  
Spencer Zhang '06  
Yi Zhang '13  
Jeffrey Zhao '13  
Ivan Zlatanov '13

## Endowment Donors

Leo Burnett Company, Inc.  
Lloyd A. Fry Foundation  
Bob, Margaret, Connor,  
Molly and Erin Hernandez

Viviana Martinez '00  
Paul and Judy Milano  
Michael Suh '97

## Gift-in-Kind Contributions

### FY13 Gift-in-Kind Contributions

GoPicnic Brands  
Mark Kammrath

Paul and Judy Milano

While we carefully prepare the donor lists, we recognize that errors may have occurred. Please accept our apology if your name is not properly represented and contact the Development Office at (630) 907-5040 or [giving@imsa.edu](mailto:giving@imsa.edu) so that our records can be corrected.

# THANK YOU!

## Leadership Giving

Gifts were received from the following individuals who served on one of the Academy's leadership boards during the 2012-2013 fiscal year.

**Legend:** <sup>1</sup> IMSA Board of Trustees  
<sup>2</sup> IMSA Fund Board of Directors  
<sup>3</sup> IMSA Alumni Association Cabinet  
<sup>4</sup> Parent Association Council Executive Committee

### Donors serving on an IMSA Board in FY13:

Melvin Bacani '90<sup>3</sup>  
Pamela O. Blackwell<sup>2</sup>  
Dr. Jerome (Jay) Budzik '95<sup>1</sup>  
Samuel Berger '07<sup>3</sup>  
Kapil Chaudhary<sup>2</sup>  
Angela P. Chen '93<sup>3</sup>  
Kevin Colby '95<sup>3</sup>  
Melissa Comenduley '90<sup>3</sup>  
Scott Crawford<sup>2</sup>  
Martin (Marty) J. DiMarzio '95<sup>2</sup>  
Julie Dowling '99<sup>3</sup>  
Regina P. Ethernod<sup>4</sup>  
Vanessa Gage '95<sup>2</sup>  
JuliAnn Geldner, J.D.<sup>4</sup>  
Bonnie Min Gier<sup>3</sup>

Jenifer Giger<sup>4</sup>  
Sheila MB Griffin<sup>1</sup>  
Kathy He<sup>1</sup>  
Dr. Cheryl Heinz '89<sup>3</sup>  
Ross Hemphill<sup>2</sup>  
John Hoesley '89<sup>2</sup>  
Eric Nels Hultgren '08<sup>3</sup>  
Matt Isoda '02<sup>3</sup>  
Dr. Steven T. Isoye<sup>1</sup>  
Leslie Jubby<sup>1</sup>  
Dr. Mary Kalantzis<sup>1</sup>  
Dr. C. Ronald Kimberling<sup>4</sup>  
Amy Kinney '95<sup>3</sup>  
Dr. Jordan Koss '89<sup>2</sup>  
Dr. Vasu Kulkarni<sup>2</sup>  
Jayashree Kumar<sup>4</sup>  
Nicholas S. Lilovich '04<sup>3</sup>

Ipsita Mahapatra<sup>4</sup>  
Dr. Stephanie Pace Marshall<sup>2</sup>  
John (Jack) McEachern, Jr.<sup>1</sup>  
Roger Moore<sup>4</sup>  
Tiffany A. Morgan '00<sup>3</sup>  
Dr. Dan Mueth '90<sup>2</sup>  
Amanda Murphay<sup>3</sup>  
Joe Nolan<sup>2</sup>  
Dr. Luis Núñez<sup>1</sup>  
Dr. Paula Olszewski-Kubilius<sup>1</sup>  
Jacob R. Plummer '96<sup>2</sup>  
E. Glenn Rippe<sup>2</sup>  
Dr. Erin W. Roche '89<sup>1</sup>  
Dr. Marsha R. Rosner<sup>1</sup>  
Brian Seby<sup>3</sup>  
Michael Suh '97<sup>2</sup>  
Winn W. Wasson '01<sup>3</sup>

## Tributes & Memorials

Tributes are designed for a variety of uses at IMSA, yet they all have a shared purpose – to memorialize or honor a family member, friend, colleague or group.

### Gifts were received in loving memory of:

Brittany Burash '12  
Dr. Stephen Ungso Choi  
Susan Croll, mother of  
Andrea Croll '97  
Dr. Jose (Gerry) Fernandez  
Charles David Goldstein  
for CADHA  
Bernard C. Hollister  
Gail Lieberman  
Julie Y. Namkung '91  
Pamela Pope, mother of  
Arthur Pope '01  
Scott Swanson '90  
Prahlad Thacker, father  
of Anil Thacker  
Mary Van Verst  
Colin Woods '08  
Scott D. Zager '06

### Gifts were received in honor of:

Pooja Agarwal '01  
and Chuck Rickert '98  
Titu Andreescu  
Dr. Sowmya Anjur  
Sra. Maria Atienza-Gabas  
Lindsey Banjavcic-Owen '06  
Vicki Burgholzer  
Margaret Cain  
Dr. Jeong Choe  
Marie Cerny  
Dr. Steven Condie  
Marjorie Donath  
Dr. Peter Dong

Ruth Dover  
William Gentzler  
Jim Gerry  
Dr. Dan Gleason  
Bonnie Min Gier '89  
Ethan Gordon '13  
Dr. Eric Hawker  
Carl Heine  
Rae Hohle '13  
Dr. Robert Kiely  
Dr. Leah Kind  
Herbert B. Knight  
Branson Lawrence  
David Lundgren  
Dr. Glenn W. "Max" McGee  
Eric McLaren  
Eric and Kim McLaren  
Barbara Miller  
Daniel Montgomery '06  
Dr. Christian Nokkentved  
Jose Palos  
Dr. Pat Patankar  
Dr. Don Porzio  
Emily Rader '15  
Dr. Aracelys Rios  
Sandy Ruksakiati  
Deb Scarano  
Brooke Schmidt  
Clay Sewell  
Dr. Eric Smith  
Tracy Townsend  
Cathy Veal  
Dr. James Victory  
Lynn Miller Wancket '99  
and David Johnson '00

# Alumni

## Donor Recognition

By Class Year

### Class of 1989

(23% participation)

Anonymous (2)  
Anna Feltes Aquino  
Rebecca L. Arnal  
Laura Brady  
Chris Caruso  
George L. Chadderdon  
Dr. Arnold D. Chung  
Steven Edward Collins  
Ray Dames  
Sophia Davenport  
Amy Downey  
John W. Ellingson  
Kurt Ewen  
Dan Frakes  
Jill Gengler  
Rick Gimbel  
Mitchell Gordon  
Wendy Hansen-Smith  
Cheryl Heinz  
John Hoesley  
David Joerg  
Karen T. Kiener  
Stan Kim  
Jordan Miles Koss  
David Kung  
Greg M. Manning  
Susan G. McAdams  
Jill Mitchell  
Andrew Oh  
Scott Pfister  
David Reed  
Dawn Marie Reed  
Badri Rengarajan  
Erin Roche  
Erik Rothbaum  
Mark A. Smith  
Amy Courtin Sohl  
Jeff Truitt  
Sarah L. Woolsey  
A. Clay Young

### Class of 1990

(24% participation)

Anonymous (1)  
PJ Alfrejd  
Melvin Bacani  
Jim Begley  
Joanna Black  
John Bozarth  
Mike J. Brown  
Melissa Comenduley  
Daniel DeUgarte  
Michele Jonsson Funk  
Chris Hage  
Dr. Katherine M. Hashimoto  
Edward Hennessy  
Michele Jonsson Funk  
Tiffany D. Kitto  
Ada Kumar  
Tanya Leinicke  
David Lockhart, Jr.  
Elizabeth Malecha  
Sue Marr  
Robin May-Davis  
Vijay S. Menon  
Dan Mueth  
Laurel Nolen

Jason Orloff  
Sendhil Revuluri  
Jason Ribando  
Lucinda Roberts-Rehfeldt  
Allison S. Sass  
Kelly Wojcik Smith  
Andrea Stonecipher  
Gabe Suarez  
Adam Taylor  
Richard Tsai  
Aimee Walter  
Karen (Beilsmith) Warren  
Alice C. Watson  
Lori Brinkmann Worledge

### Class of 1991

(19% participation)

Anonymous (2)  
Purusharth Agrawal  
Ryan Anderson  
Thao Anderson  
Joseph Bonomo  
Daihung Do  
Gregory Draves  
Trisha Jung  
Joe Kestel  
Jason H. Kim  
Tamora Kimmitt  
Tanya E. Kobyluk  
Austin Krumpfes  
Jon-Paul Leduc  
Sandy Lux  
Emily A. Mellott  
Jean Catherine Near-Ansari  
Rajan Rajbhandari  
Kurt Revis  
Shawn Scott  
Jeffrey M. Strang  
Suzanne Weber, M.D.

### Class of 1992

(20% participation)

Christopher Beck  
Rachel Benoit  
Rajesh Govindaiah  
Gretchen E. Green, M.D., M.M.S.  
Kaushal Gupta  
Beth Hage  
Tim Harms  
Michelle Hart  
Chelsy Ann Hopper  
Emily E. Hostetter  
Elizabeth Kinsella  
Neil T. Krasovec  
Daniel Lee  
Christy Lee  
Aaron Lieber  
Cynthia (Westphal) McKendall  
Parthiv Mehta  
Timothy I. Meyer  
Ann Catherine Mountz  
Rebecca Joan Mundell  
Joy R. Ott  
Sameer Patel  
Eric R. Quinn  
Christopher M. Sedlack  
Priya Sekar  
Juris Shibayama  
Daniel Brian Sinars

Sharon Smith  
Cliff Sodergren  
Adam M. Theros  
Glenys A. Thorstenson  
Richard R. Tung  
Jason Wong  
Lisa Wu

### Class of 1993

(23% participation)

Anonymous (1)  
Alaina M. Anderson  
Andrew Beaver  
Joe Beda  
Leah Berman Williams  
Gabriel L. Black  
Barbara A. Buchthal  
Christopher C. Burke  
Jen Cha  
Angela P. Chen  
Ann Chen  
Frederick W. Chen  
Elizabeth Chung  
Steve Crutchfield  
Brian Etscheid  
Michelle M. Garrison  
Kurt Gimbel  
Dr. Benjamin Gold  
Matt Groch  
Susan Heersema  
Matthew J. Holliman  
Matthew G. Horr  
Dr. Alan Hsu  
Jesse Hsu  
Vanessa Hughes  
August Jackson  
Margaret Jacobs  
Ryan Keeney  
Alok Khuntia  
Michael H. Kim  
David A. Knol  
Apinya Lertratanakul  
Jet-Sun Lin  
Wanda Mahoney  
Tarun Nagpal  
Sharnique Nichols  
Renee Pazdan  
Matt Pritchard  
Tony A. Rippey  
Sheri D. Robinson  
Noah Rosenberg  
Chuck Saletta  
Ben Siron  
Ray Stadt  
Eric F. Stuckey  
Adam M. Theros  
Suchon Tuly  
Richard R. Tung  
Matt Unterman  
Claire C. Wang, M.D.

Brad Boyer  
Jennifer Chapin  
Ernest Chu  
Kevin T. Chu, Ph.D.  
Peter Zhe Chu  
Dr. Arnold D. Chung  
Jenny E. Deller  
Liza Escudro  
Rita Etscheid  
James L. Faletti  
Peter Fang  
Brian M. Grunkemeyer  
Manu Gujrati  
Gerrad A. Holtz  
Eric N. Johnson  
Elizabeth Darr Keserauskis  
Rajesh Keswani  
Han Y. Kim  
Takayuki Kohata  
Jason Krebs  
Patrick Kutz  
Demmaree Lilley Li  
Alan Magerkurth  
Mia K. Markey  
Darshan H. Mehta  
Winjie Tang Miao  
Ash Morgan  
Andrea (Lauterbach) Myers  
John Nelson  
Lucas Pain  
Matthew R. Pearl  
Jamie Pflasterer  
Irfan A. Qureshi  
Karen Rakers-Dowd  
Deborah Linksvayer Rash  
Shailushi Baxi Ritchie  
Ankur H. Shah  
Lynn Sosa-Bergeron  
Paul Strasma  
George W. Su  
Hera C. Vlamakis  
Leo K. Wang  
Raymond Wee  
Jessica (Peterson) White  
Damian M. Wiest  
Michael R. Wilson

### Class of 1995

(22% participation)

Karen Ballinger  
Jerome Budzik  
Kevin Colby  
Marty DiMarzio  
Anne Elliott  
Anthony Engel  
Heidi Engel  
Vanessa Gage  
Jake M. Gerstein  
Tiy Martin Goddard  
Maria R. Gunaratnam  
Holly L. Hamilton  
Morgan Hawker  
Areto Imoukhuede  
Kraig Jakobsen  
Cliff S. Kane  
Eric J. Keller  
Francis N. Kim  
Toshio Kimura  
Anne L. Kinderman  
Amy Kinney  
David Kinney  
Melanie S. Kotys  
Kurt Krukenberg  
Sharon S. Lin  
Maura E. McLaughlin  
Masum Momaya  
Justus Morris  
Scott Narimatsu  
William Paterson  
Charu Ramaprasad

Megan L. (Mandernach) Shober  
Ravi K. Singh  
Patricia A. Sullivan  
Van T. Tang  
Dr. Deepti Tolia  
Jessica Droste Yagan  
Sam D. Yagan  
Anna Yusim  
Earl I. Zaromb

### Class of 1996

(23% participation)

Yaw B. Agyemang  
Jeanine M. Batterton  
Christopher J. Berry  
Jonathan Booth  
Kathleen (Ervin) Booth  
Michael H. Brody  
Sara A. Carson  
Mary P. Carter  
Andrew Dali Chen  
Audrey M. Chen  
Nina Chinosornvatana  
Julia Colby  
Brian Cudiamat  
Laura Dabbish  
Jaime L. Eigner  
Eric Timothy Engelhard  
Eva Bach Engelhard  
Brad Friedman  
Irene Friedman  
Thomas J. Gower  
Krishna V. Gumidyala  
Gaorav Gupta  
Sadia T. Harper  
Erin Hawley  
Matt Hellige  
David Kang  
Vijay Karunamurthy  
David Byung Min  
Brian Mirous  
Patricia Oman  
Susan Pasnick  
Jacob R. Plummer  
Maria M. Rhodes  
Brian A. Sebbly  
Amanda Leonard Shanbaum  
Meredith Shaw  
Christopher Swan  
Katerina A. Swanson  
Alistair K. Templeton  
Gaurav A. Upadhyay  
Jared Wadsworth  
Jeffrey H. Wang, M.D.  
Jonathan Wilson  
Jasen Yang

### Class of 1997

(19% participation)

Anonymous (2)  
Jacob Ament  
Michelle Anderson  
Charles Ballowe  
Lisa M. Chambers  
Crystal T. Clark  
Elizabeth Cohen  
Nicole Dixon  
Katie Duncker  
Katlyn Jie Gao  
Benjamin Gertzfield  
Neal Groothuis  
Daniel Hall  
Miena Meek Hall  
Andrea Hong  
Avery Hoppa  
Reginald Jackson  
Joanna (Messer) Jordan  
Grace Audrey Kim  
Ankur Kothari  
Amanda (De Zutter) Kotlyar

Andrea (Croll) Ngola  
David Perkins  
Douglas Pratt  
Dwan LaMar Prude  
Michael A. Quick  
Andrew Raatjes  
John B. Randall  
Ranjeet Rao  
Anna Remis  
Paul Andrew Ross  
Elizabeth Schaefer  
Sarah Scott  
David Chen-yu Shih  
Erin Stone  
Michael Suh  
Christopher T. Sukhaphadhana  
Joshua Unterman  
Ellen Weiss Wiewel  
Gus Xinon  
Matt Zanon

## Class of 1998

(22% participation)

Anonymous (2)  
Peter Adamczyk  
Sachin D. Agarwal  
P.J. Balin-Watkins  
Karen Chesley  
Julie Comerford  
Anand Dash  
Danielle Ducharme  
Victoria Ehle  
Natasha Lynn Fast  
Scott J. Garvin  
Yvonne Gibson  
Derek A. Houston  
Feihong Hsu  
Juan Inton  
Dana Johnson  
Thomas Johnson  
Tashil Ju  
Alice Kim  
Juhee Kim  
Vishnu Kurella  
Lucinda Lawson  
Rebecca Machalow  
Patri Marconi  
Trisha Youngquist Maurer  
John Philip McFerrin  
Amy Patricia Meek  
Katja Meyer  
Camille Moore  
Matt Mowers  
Eric Franklin Mulch, Esq  
Kelly Jean Rabin  
Megan Reynolds  
Chuck Rickert  
Virginia Kathleen Ryan, J.D.  
Kavitha Sagi  
Barry Schnorr  
Megan Leigh Spencer  
Andrew Torres  
Derrick K. Tung  
Jennifer Lanette Urbauer-Parsons  
Drew Van Pelt  
Jaime Erin Devereaux Wiley

## Class of 1999

(21% participation)

Jessica (Yokley) Brand  
Michael Patrick Comerford  
Charlie Corrigan  
Julie Dowling  
Carrie (Giordano) Eklund  
James Wilcox Ethington  
Anne Catherine Feltoch  
Aaron Foss  
Paul Heaberlin  
Jonathan Helm

Natasha Hill  
Michael Keenan Huffington  
Miyam Jankov  
Jane Jih  
Brian Kambach  
Christen Klochan  
Terry Koo  
Ben Lai  
Elissa Larkin  
Nathaniel C. Leung  
Tiffany Mayo-Chambers  
Erica McEvoy  
Dr. Kate Murray  
Zsolt Nadas  
Maria Pacana  
Vijay Rajagopal  
Stacey Resetar Mowers  
Aimee Wilczynski Rodriguez  
Ben Rugg  
Davender Sahota  
Antonia Sargeant  
Brandon Schlesinger  
Jason W. Siefferman  
Marina Sivilay  
Irene Sofil  
Aaron Thompson  
Amanda V. Wozniak  
Ethan Wozniak  
Marisa Zuskar

## Class of 2000

(17% participation)

Margaret J. Anderson  
Christine Banek  
Kent Borecky  
Nicole Brown  
Jason Victor Chang  
Sylvie Chau  
Henry Milton Chu  
Kevin Clair  
Vanessa H. Clark  
Jennifer M. Davis  
Julie May Eng  
Kevin Andrew Hall  
Douglas Heintz  
Andrew Hoesley  
Radhika K. Joag  
Anjali Johnson  
Andrea Llenos  
Viviana Martinez  
Jessica McAlear  
Timothy A. Messer  
Tiffany A. Morgan  
Nicholas P. Morley  
Akhil Narang  
Vishesh Narayan  
Donielle N. Newell  
Stephen Paige  
Aaron Parness  
Jeff Pasqualucci  
Christina L. Prested  
Gemilo V. Resaba, Jr.  
Matthew Roderick  
Andrea Ronkowski  
Maya Srikanth  
Michael Stukel  
Bayly Wheeler

## Class of 2001

(16% participation)

Anonymous (1)  
John Frederick Bart Addison  
Pooja K. Agarwal  
Nikhil Agarwal  
Jason Barnes  
Megan Fast  
Charles Christopher Felish  
Marissa A. Fierz  
Laura Freund  
Wendy Melissa Gable

Matthew Hall  
Katrina Herrmann  
Katherine Lorentzen Hove  
David E. Ignacio  
Stacia Ilchena  
Julia Jennings  
Judy H. Kang  
Arshia Khan  
Kathleen A. King  
Susan M. King  
Lauren R. Kozak  
Joonil Kwak  
Ivan Young Lee  
Jennifer F. Levin  
Lucy Lu  
Raymond A. Magee, Jr.  
Kyle Pierce Naff  
Brian Park  
Connie Jung Park M.D.  
Patrick Sullivan Polk  
Arthur J. Pope, Ph.D.  
Shaun Alan Roach  
Thomas Rooney  
Alison Ruddy  
Sarah Sanders  
Polina A. Segalova, Ph.D.  
Mary Elizabeth Sullivan  
Kelly (McArdle) Sulo  
Sarah Warning  
Winn W. Wasson  
Emily L. Zeissler

## Class of 2002

(20% participation)

Diana Tung Barnes  
Amanda S. Besinger  
Justin Edward Blanchard  
Catherine Breckenridge  
Yong Chen  
Nathaniel S. Covert  
Mykal Dortch  
Jessica L. Dy-Johnson  
Matt Isoda  
Jesse T. Jang  
David H. Klemptner  
Elizabeth N. Lampe  
Andrew Blake Langan  
Branson Scott Lawrence  
Stephanie L. Lewis  
Rebecca S. Liu  
Zouyan Lu  
Chelsea Lynn Maiero  
Jennifer Mo  
Mallory Arnell Morris  
Keeva H. Payne  
Lynn Qin-lin Peng  
Vanessa C. Pentangelo  
Minji Ro  
Erin Schlee  
Kevin Schlee  
Jessica R. Senning  
Rebecca Shane  
Brendan Todd  
Vanessa R. Vardon  
Alan Michael Ware  
Jonathan P. Warnock  
Tiffany White  
Arthur Wojtowicz Wit  
Grace Woo  
Danny Yagan  
Amy Weiran Yan  
Kevin Yang

## Class of 2003

(27% participation)

Anonymous (1)  
Shreyas Bhat  
Matt (Born) Bornski  
Adam T. Carpenter

Shan Colletti  
Asher Edes  
Sarah E. Elliott  
Kaori C. Ema  
Laura T.S. Foote  
Dhaval Garg  
Matthew Aaron Getz  
Mark D. Hoadley  
James Holmes  
Joyce A. Hwu  
Tim Johnson  
Benjamin A. Jorns  
Vivasvat Kaul  
Nicholas Kim  
Charlie Kinzer  
Chris Knowlton  
Elaine C. Khoong  
Sarah L. Lambert  
Julie Lauffenburger  
Jeanne Lee, M.D.  
Brian A. Link  
Joseph Liu  
Heidi Lu  
Katherine Mackenzie  
Kathleen Theresa Malinowski  
Sean Miller  
Nicholas H. Moryl  
Amanda Murphya  
Sydney K. Null  
Amy Leigh Orsborn  
Jen Poulsen  
Robert Quimby  
Kavita L. Ramakrishnan  
Caitlin Ramsey  
Timothy Roderick  
James Sanders  
Urvi Shah  
Phil Stanton  
Lucas Sturnfield  
Stephanie Sullivan  
Christopher E. Szucko  
Lucas H. Ting  
Vaibhav Upadhyay  
Erik Volkman  
James Z. Wang  
Angela M. Weis  
Rebecca Williams  
Richard Yao  
Rick S. Yuan

## Class of 2004

(15% participation)

Anonymous (2)  
Amanda J. Adeleye  
Steven P. Benario  
Kora Bongen  
Emily I. Coleman  
David A. Crow  
Kevin M. Flannery  
Jacob Foster  
Sarah E. Grothen  
Heather M. Haines  
Alisha G. Howell  
Matthew M. Ito  
Amanda H. Jablonsky  
Gabriel William Jacobson  
Ruozhou Jia  
Garry James Kennebrew, Jr.  
Amy Li  
Nicholas S. Lilovich  
Aubrey E. Lutz  
Mikin Patel  
Kyle B. Rader  
Alexandra Sasha Rahlin  
David H. Raileanu  
Monica (Radosevich) Reynolds  
Alexander P. Serrano  
Kevin T. Sharp  
Heather Taff  
Michael J. Tu

Nisha Wadhvani  
David S. Xu  
Anita Xue  
Dunping Yang

## Class of 2005

(10% participation)

Anonymous (1)  
Jawwad Akhtar  
Brian Baker  
Paras D. Bhayani  
Jordan McNair Burdinie  
Mary Frances Dorn  
Robert Forler  
Nicholas Harker  
Charles Keaton  
Andrew Joseph Keller  
John Koval  
Sharad S. Kumar  
Jenna Maloka  
Darshana Nair  
Joseph Phan  
David Qasem  
Tania Sanchez  
Margot Seigle  
Laura Janine Sharpless  
Katie Siemens  
Mark Simmons  
Ryan Woods  
Ying (Amy) Ye

## Class of 2006

(12% participation)

Anonymous (1)  
Kavin Arasi  
Chelsey Bayer  
Jonathan A. Bragg  
Kevin Chang  
Mi (Amy) Chen  
Jenny Cheng  
Nathan Cheng  
Xiangyu Ding  
Matt Drake  
Jamison A. Hill  
John R. Holmstrom  
David P. Loveland  
Andrew Pipathsouk  
Vishaka Raguveer  
Michelle A. Rogers  
Natasha D. Sansone  
Rae Shih  
Maximiliano Silvestre  
Samantha E. Spalding  
Jennifer LeClair Townsend  
Emilie T. Yeh  
Richard Zhang  
Spencer Zhang

## Class of 2007

(10% participation)

Samuel Berger  
Jorrell R. Bonner  
Matthew D. Carter  
Stephanie H. Chang  
Daniel M. Dean  
Theresa L. Geiger  
Claire L. Herdeman  
Heather Anne Hoff  
Ravi K. Kesari  
Catherine Ko  
Wei Luo  
Eise A. Marifian  
Sarah L. McPike  
Luke S. Moryl  
Ann Pan  
Alexandra Plattos

(Continued on next page)

(Continued from previous page)

**Class of 2007**

Benjamin V. Rodrigues  
Adam E. Tenhouse  
Anil R. Wadhvani  
Charles Whittaker  
Theodore Yeh

**Class of 2008**

**(8% participation)**  
William Cliff Boldridge  
Liyun David Chang  
Seong-Ah Marcella Cho  
Yangbo Du  
Karissa F. Fernandez  
Eric Nels Hultgren  
Jonathan Koch  
Kyson Joseph Mathieu  
Birce Onal  
Sandeep Paruchuri  
Sophia Pilipchuk  
Jason Rock  
Kyle Schirmann  
Jacqueline Pearl Steffen  
Angela Suh  
Ryan Yuan Wang  
Robert Michael Zedric  
Jun Yue Zhang

**Class of 2009**

**(3% participation)**  
Elizabeth Bartos  
Vidya Govind-Thomas  
Adam J. Leemans  
Ariel Liu  
Andrew William Nelson  
Cari L. Peterson  
Jenny Roderick  
Anisha Vyas

**Class of 2010**

**(8% participation)**  
Jake Edward Ayala  
Evan Balzuweit  
Stephanie Bernardo  
Shelly S. Bhanot  
Michael J. Gleeson  
Alexandra Anne Hizel  
Jessica Lynn Hunter  
Anusha Kumar  
Andrew Lee  
Stephanie Martinez  
Aldo M. Rossi  
Isolina R. Rossi  
Michelle Rudolph  
Hannah E. Schmitt  
Evan Schwerbrock  
John Jian Wang  
Elizabeth Jane Zaretsky

**Class of 2011**

**(9% participation)**  
Ruchi Aggarwal  
Lisa O. Akintilo  
Cindy Angpraseuth  
Katherine E. Arenas  
Tasha Arvanitis  
Wesley Tomson Bradley  
Dane H. Christianson  
Sharon E. Duval  
William Robert Erwin  
Justin L. Feng  
Wesley Earl Herron  
Corinne A. Madsen  
Ian S. McInerney  
Allison Morrow  
Melissa O'Brien  
Brian Page  
Mehal Shah  
Jack Shi  
Gary Wang  
Kenny Wang  
Karna Warrior  
Megan Wu

**Class of 2012**

**(10% participation)**  
Michael Atten  
Jennifer Bailey  
Ajay Chatrath  
Logan Damiani  
Nathan Geldner  
Miranda Herzog  
Adam Kalinich  
Emil Khabibouline  
Samantha J. Levin  
Sarah Lisk  
Peter Lu  
Nolan Maloney  
Hannah Miller  
Eric Ordonez  
Deokgeun Park  
Jorge Quero  
Jeannine Schulz  
Kyle Skoog  
Hyun Jin Song  
Sonam Vyas  
Michael Connor White  
Taylor Yost  
Vivian Zhang

# Alumni Volunteers

Mivil Abraham '08  
Douglas Adams '99  
Dr. Pooja Agarwal '01  
Lisa Akintilo '11  
Yusuf Aktan '12  
Betsy Allen '06  
Dr. Angel Alvarez '98  
Jessica Anderson '01  
Vidya Anjur '12  
Christopher Aruffo '89  
Tricia Aung '04  
Dawna Bagherian '10  
Melvin Berger '90  
Amishi Bajaj '10  
Brian Baker '05  
P.J. Balin-Watkins '98  
Jonathon Bekker '06  
Jennifer Bennett '10  
Rachel Benoit '92  
Samuel Berger '07  
Allison Bergin '08  
Mitchell Bieniek '12  
Wendy Bindeman '12  
Derek Blanchette '03  
Marilyn Blasingame '08  
Joe Bonomo '91  
Wesley Bradley '11  
Dr. Jay Budzik '95  
Ray Buhr '05  
Caitlin Bunt '09  
Jordan Burdine '05  
Ernesto Cruz Caceres '97  
Luis Carbajal '09  
Matt Carter '07  
Jennifer Cash '90  
Sarah Caveglia '06  
Reginald Champagne '02  
Alicia Chan '03  
Belinda Chang '01  
Robert Chang '89  
Angela Chen '93  
Ann Chen '93  
Irene Chen '10  
Megan Chen '12  
Christina Cheng '12  
Jenny Cheng '06  
Stephanie Cheng '11  
Karen Chien '05  
Nina Chinosorn '96  
Lindsey Choi '08  
Henry Chong '92  
Francis Cocjin '12  
Kevin Colby '95  
Emily Coleman '04  
Katia Colin '12  
Caitlyn Collett '12  
Melissa Comenduley '90  
Rachel Cook '01  
Charlie Corrigan '99  
Eleanor Cory '12  
Joshua Cote '08  
Brittanie Crain '05  
Catherine Crawford '09  
Jennifer Crawford '12  
Brian Cudiamat '96  
Megan Czajka '12  
Irene Czajkowski '99  
Raymond Dames '89  
Cynthia Nguyen Dang '03  
Monica Daniels '12  
Shelby Daniel-Wayman '12  
Sophia Davenport '89  
Sharon DeCaro '03

Jenny Deller '94  
Lucas Delort '09  
David Derry '10  
Dr. Daniel DeUgarte '90  
Dean Dieker '03  
Alex Dietrich-Greene '97  
Hilary Dietz '09  
Marty DiMarzio '95  
Diliana Dimitrova '11  
Kristen Nykoel Dinardo '03  
Yuanxia Ding '00  
Marcelo Diop-Gonzalez '12  
Quoc Do '90  
Julie Dowling '99  
Michael Driscoll '07  
Alexander Drummond '09  
Johnny Duan '12  
Sena Dzakuma '08  
Eric Engelhard '96  
Eva Bach Engelhard '96  
Andrew Ericson '10  
Salvador Esparza '10  
Tiernan Evans '08  
Jenny Fang '09  
Natasha Fast '98  
Yan-Yang Feng '12  
Sharon Sundry Ferrell '89  
Roy Fisher '09  
Michelle Fitzpatrick '01  
Dan Frakes '89  
Sarah Frey '92  
Vanessa Gage '95  
Cristal Garcia '07  
Dhaval Garg '03  
Theresa Geiger '07  
Jill Gengler '89  
Benjamin Gertzfield '97  
Bonnie Min Gier '89  
Marissa Ghant '08  
Ricardo Gonzalez '09  
Lani Gordon '97  
Katrina Gossman '07  
Vidya Govind-Thomas '09  
Rhiana Gunn-Wright '07  
Brinda Gupta '12  
Saarthak Gupta '12  
Trevor Hahm '12  
Jing Han '06  
Mandy Hayes '07  
Dr. Cheryl Heinz '89  
Lauraleigh Heffner '10  
Gabriella Heller '10  
Jacob Henry '12  
Ovi Hentea '06  
Tyce Herrman '08  
Katrina Herrmann '01  
Mark Hoadley '03  
Dr. Andy Hocker '91  
Mark Hoemmen '98  
John Hoesley '89  
Chelsy Hopper '92  
Thomas Houlahan '05  
Pete Howes '12  
Dorcas Huang '12  
Aleata Hubbard '02  
Eric Hultgren '08  
Jessica Hunter '10  
Adnan Husain '98  
Aiva Ilevins '06  
Dr. Princess Imoukhuede '98  
Lara India '07  
Matthew Isoda '02  
August Jackson '93

Shawon Jackson '11  
Ethan Jacobs '12  
John Jaeger '04  
Ankit Jain '08  
Shantanu Jain '12  
Brittany James '09  
Kumar Javvaji '97  
Dr. Jane Jih '99  
Irene Jing '12  
Jeremy Johnson '08  
Tremylla Johnson '00  
David Jordan '07  
Benjamin Jorns '03  
Damie Juat '12  
Amanda Kabak '92  
Glen Kabumoto '95  
Jason Kahn '03  
Arielle Kanters '05  
Aditya Karan '12  
Nilesh Kavthekar '12  
Dr. Sanza Kazadi '90  
Dr. Garry Kennebrew '04  
Ravi Kesari '07  
Emil Khabibouline '12  
Micha Kilburn '95  
Mimi Kim '04  
Joshua Kinder '05  
Clinton Kinkade '07  
Amy (Timm) Kinney '95  
Jordan Koss '89  
Jakob Kotas '05  
Alekyia Kothamasu '12  
Amanda Kotlyar '97  
Rachel Kovac '05  
Monica Kozbial '11  
Alarmel Krishnaswamy '96  
Melanie Kuehn '98  
Sneha Kumar '03  
Benjamin Kuo '12  
Opeyemi Kusoro '09  
Sam Kwak '11  
Eric Kwan '10  
Noelle Kwan '07  
Jasmine Kwasa '09  
Kristen Lail '91  
Sonia Lal '93  
Dan Langan '02  
Gregory Larnell '00  
Vivian Lau '03  
Christy Lee '92  
Adam Leemans '09  
Dr. Apinya Lertratanakul '93  
Melanie Leung '06  
Stephanie Leung '06  
Samantha Levin '12  
James Li '00  
Xiaoyu Li '12  
Thomas Lightfoot-Vidal '12  
Nicholas Lilovich '04  
Santina Lin '10  
Annie Liu '07  
Ariel Liu '09  
Jimmy Liu '09  
Naomi Liu '11  
Xuxuan Liu '09  
David Lockhart '90  
David Lorentzen '10  
Zouyan Lu '02  
Steven Lucy '02

For the list of  
student donors  
by class year,  
please visit

<https://sites.imsa.edu/IMS360>

## THANK YOU to the more than 400 alumni who generously shared their time and talents with IMSA during the 2012-2013 academic year.

These alumni volunteers, representing every class year, helped with technology projects, recruited prospective students, served as mentors for current students, shared legislative contacts, and participated in media interviews and special events. They led the IMSA Alumni Association, taught week-long Intersession courses, coordinated reunions and alumni gatherings, advised student clubs, worked with IMSA's Statewide Student Initiatives and more. These alumni also provided strategic counsel to the IMSA Board of Trustees, the IMSA Fund Board of Directors, administrative and program leaders, and Admissions Student Review Committee.

Weï Luo '07  
Justine Ly '11  
Alex Ma '08  
Rahul Maheshwari '12  
Egle Malinauskaitė '12  
Kate Malinowski '03  
Jenna Maloka '05  
Zack Maril '10  
Stephanie Martinez '20  
Susan Massey '01  
Brandan Matthews '10  
Rhyston Mays '12  
Angela McByrd '08  
Ian McInerney '11  
Sarah Mcpike '07  
Allyson Milenkovic '12  
Hannah Miller '12  
Sreeram Mittapalli '97  
Jennifer Mo '02  
Denise Mol '11  
Christina Momchev '12  
Tiffany Morgan '00  
Maciej Mroczek '05  
Dan Mueth '90  
Kirti Munjeti '13  
Alexander Muñoz '10  
Elizabeth Murphy '10  
Amanda Murphyao '03  
Sulochana Mutha '08  
Ramez Naam '90  
Laura Napierkowski '12  
Vishesh Narayan '00  
Lina Nayak '03  
Ilya Nepomnyashchiy '09  
Sammy Nguyen '09  
Carly Nix '04  
Jennifer Norton '92  
Matt Norton '07  
Anthony Nuval '98  
Chibuzo Obasi '12  
Melissa O'Brien '11  
Paloma Ocola '12  
Ranait O'Connor '09  
Birce Onal '08  
Carlo Ordonez '02  
Jason Orloff '90  
Amy Orsborn '07  
Kristen Osenga '90

Meaghan Pachay '09  
Kori Pacyniak '00  
Brian Page '11  
Scott Page '09  
Stephen Paige '00  
Annie Park '02  
Jeff Pasqualucci '00  
Lisa Patel '10  
Mikin Patel '04  
Ernestina Perez '09  
Gregary Pergrossi '12  
Zachary Pergrossi '12  
Robert Petersen '94  
Dr. Amy Peterson '04  
Lisa Peterson '08  
Scott Pfister '89  
Capt. Pearl Phaovisaid '99  
Ravi Pilla '09  
Martina Pillay '09  
Anne Pipathsouk '09  
Alexandra Plattos '07  
Kathleen Plinske '97  
Jacob Plummer '96  
Dr. Arthur Pope '01  
Amanda Potocky '93  
Kristen Pratt '04  
Dwan Prude '97  
Aparna Puppala '99  
Gina Qin '12  
Faith Quist '11  
Amanda Raddatz '01  
Matthew Rasmussen '12  
Abhinav Reddy '12  
Morgan Rehberg '11  
Anna Remis '97  
Jorge Reyes '99  
Meredith Rhein '08  
Ashley Ro '11  
Kaleigh Roberts '06  
Clement Robinson '06  
Douglas Robinson '02  
Dr. Erin Roche '89  
Jason Rock '08  
Jenny Roderick '09  
Aimee Rodriguez '99  
Mariela Rodriguez '12  
Madison Rogers '12  
Rae Rokosh '09

Michelle Rudolph '10  
Capt. Kenyatta Ruffin '99  
Ellie Ryan '08  
Satoe Sakuma '11  
Sarah Salameh '12  
Sid Sapru '10  
Lindsey Schobert '09  
Brian Sebyy '96  
Polina Segalova '01  
Rital Shah '10  
Samir Shah '11  
Rebecca Shane '02  
Kimberly Sherwin '11  
Bo Shi '08  
Kevin Shi '11  
Rae Shih '06  
Alan Shramuk '12  
Elisa Smith '96  
Amy Sohl '89  
Dr. Sarah Song '96  
Stephanie Song '06  
Amelia Sorensen (Adams) '98  
Dr. Lynn Sosa-Bergeron '94  
Leigh Spencer '98  
Ray Stadt '93  
Jessica Stephenson '97  
Sarah Stevens '07  
Carrie Steyer '89  
Danielle Strickland '10  
Katie Stromdahl '09  
Molly Sturm '03  
Lucas Sturnfield '03  
Michael Suh '97  
Michelle Suh '12  
Stephanie Sullivan '03  
Daniel Sun '03  
Alex Surasky-Ysasi '03  
Hannah Swerbenski '13  
Dr. Meghan Tadel '95  
Heather Taff '04  
Ana Tellez '02  
Cristina Thomas '07  
Lacey Thomas '08  
Amber Thompson '03  
Courtney Thompson '03  
Aaditya Tolappa '12  
Connor Tomasko '11  
Amanda Townsend '04

Melanie (Kotys) Traugher '95  
Joseph Turek '90  
Milan Udawatta '09  
Thiran Udawatta '08  
Viyan Udawatta '05  
Matt Unterman '93  
David Vakil '92  
Sydney Valero '12  
Karthik Vantakala '09  
Seema Verma '04  
Veena Villivalam '98  
David Wagner '93  
Kelly Wallin '11  
Christopher Wallis '11  
Tabbey Walquist '09  
Lyn Miller Wancet '99  
Dr. Claire Wang '93  
Connie Wang '12  
John Wang '10  
Kevin Wang '12  
Jessica Ward '02  
Winn Wasson '01  
Shannon Watson '92  
Charles Whittaker '09  
Jered Wierzbicki '02  
Akilah Wilkes '95  
Jordan Williams '12  
Dr. Tuwanda Williamson '91  
Jonathan Wilson '96  
Keith Winstein '99  
Michael Wong '11  
Mark Wrzyszczyński '92  
Megan Wu '11  
Lisa Xia '03  
Diana Xu '12  
Mark Xue '09  
Sam Yagan '95  
Michael Yamakawa '10  
Kevin Yang '02  
Karthik Yarlagaadda '12  
Fei Ye '09  
Kelly Yom '12  
Vanya Yorgova '12  
Stanley Yuan '12  
Elizabeth Zaretsky '10  
Jody Zarrell '98  
Sharon Zeng '08  
Joanna Zhang '05  
Alice Zhao '04  
Amy Zhou '10  
Abigail Zillner '06  
Elaina Zinti '12

# THANK YOU!



Illinois Mathematics and Science Academy®  
 1500 Sullivan Road  
 Aurora, Illinois 60506-1000

Although we strive for accuracy, if you see an error in your mailing label, please call the Office of Marketing and Communications at 630-907-5033.

# SAVE THE DATE

for the Following IMSA Events!

- Intersession January 6-10, 2014
- IMSAloquium April 17, 2014
- Alumni Weekend July 18-29, 2014

Includes reunions for the Classes of 1994, 1999, 2004, and 2009. To join a reunion planning committee, contact [myimsa@imsa.edu](mailto:myimsa@imsa.edu). For information on IAA events, visit [www.imsaalumni.org](http://www.imsaalumni.org).

## 360 goes green

Help the IMSA360 magazine go green! If we have your current e-mail address, you will now receive a full color version to view online. If you'd still like IMSA360 mailed to you in print form, or need to update your contact information, please visit [www.imsaalumni.org/360](http://www.imsaalumni.org/360).




Illinois Mathematics and Science Academy®  
 1500 Sullivan Road  
 Aurora, Illinois 60506-1000  
 630-907-5000  
[www.imsa.edu](http://www.imsa.edu)

For more content and important updates, find us online.

<https://sites.imsa.edu/imsa360>

IMSA360: Recipient of the National School Public Relations Association Award of Excellence, the Illinois School Public Relations Association Award of Excellence, the American Graphic Design Award and the Hermes Creative Award.